

STVS MODULAR

2022

Professional on modular handrail, fence and gate systems



Factory: Ha Duy Phien Street, Cu Chi District, Ho Chi Minh
city, 700000, Vietnam
Hotline: +84 938770765

STV

M O D U L A R



M O D U L A R

SAFETY . DURABLE . MODULAR . ELEGANT

ABOUT STVS MODULAR

STVS Modular is Vietnam leading manufacturing of innovative modular handrail, Modular railing fence and Gate systems.

At STVS Modular, we do things differently! We're always on the lookout for better ways to solve the unique obstacles construction projects face, so that our customers can focus on doing what they do best.

Our various range of handrails, guardrail systems for commercial and industry are specifically designed for a wide range of industrial, commercial and civil applications. All our modular handrail systems comply with OSHA standard or TCVN standard, so you know you're always covered.

Our range of proprietary modular designs are manufactured in house and designed to save our customers time and money, and our personalised approach to customer service ensures you're looked after from concept to installation. Our barrier systems are fit for purpose, simple to use, and able to be modified to cater for any unique requirements, and our streamlined ordering and installation process is designed with customer convenience in mind.



© STVS MODUAR



The sliding gate and swing gate boasts the latest technology and such smooth and stable operation. Our know-how about coating and connection technology give beautiful finishing and high corrosion resistant ability for products. This give a great quality and good looking for the products in long term.

The Modular railing fence system with elegant design for high profile locations, Easily combined with entrance gates and detection systems. Secure and suitable for all terrains. Moisture and dirt resistant surfaces. This attractive fence is ideal for office buildings, schools, and other high-visibility location

From initial design to final quality assurance processes, we make sure our goods are reliable and exceptional.

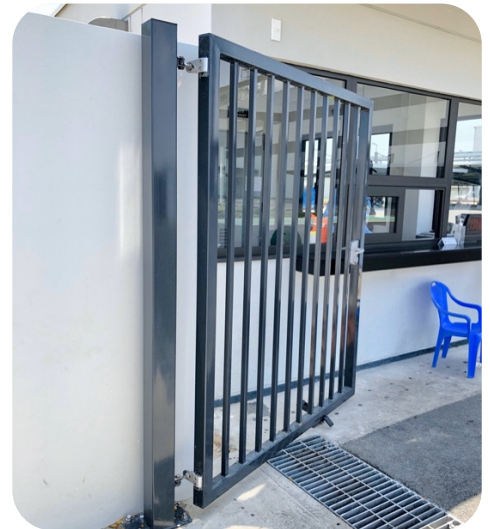


PRODUCTS RANGE

Sliding gate



Swing gate



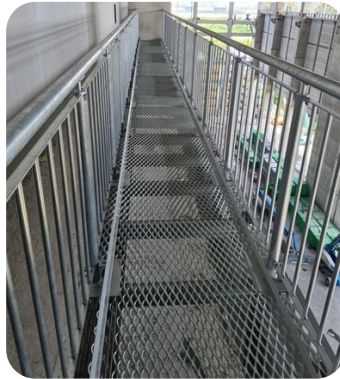
Grab rail & Wall handrail



Platform & Staircase (Steel – Stainless steel)



Modular handrail



Modular Balustrade



Modular fencing



OUR CUSTOMER



MAEDA



OBAYASHI

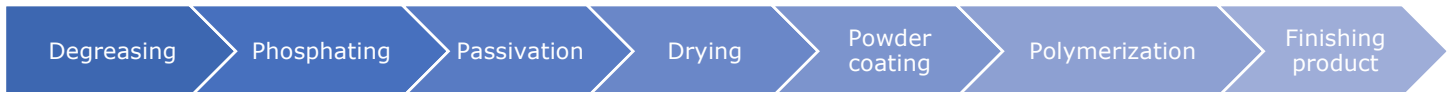


We fulfill our promises

COATING PROCESS

POWDER COATING

Application for **modular handrail, gate, fencing, balustade, clamp fitting**



STVS apply fully auto painting system and high quality Polyester (PE) powder from Interpon. Which make STVS products quality achieve global standard and perfect apply for out door fuctions.

In order to increase the corrosion resistant ability. A primer layer can be applied to achieve incredible anti-corrosion quality with 10 years anti corrosion warranty up to C4 environment condition (accroding to ISO 12944-2)

LIQUID MARINE COATING

Application for **gate products.**



STVS Marine coating paint system use high quality Marine PU paint from American maker give excellent quality and finishing appearance of products

The painting process are high strickly compliance to ISO 8501. The material be shot blasting Sa 2.5 to creat the rough surface that increase the connection strength between surface and paint.

STVS Marine coating system give excellent anti-coorsion quality with 10 years anti corrosion warranty up to C4 environment condition (accroding to ISO 12944-2)

HOT DIP GALVANIZED

Application for all products: **Fence, gate, handrail and balsutrade, clamp fitting**

STVS Modular use hot dip galvanized system accroding to ASTM A123

Our know-how about the way to have good air run when hot dip galvanized give a smooth and beautiful finishing for fence and balustrade products. This give a great quality and good looking for the products.

COLOR

Standard color for liquid paint finish:



RAL6005



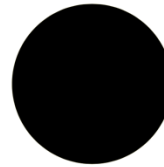
RAL7016



RAL7035



RAL7005

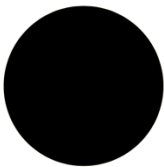


RAL9005



RAL9010

Standard color for PE powder coating paint finish:



RAL9005



RAL9010



RAL 1033

Other color available upon request





STVS NO-WELD, MODULAR HANDRAIL SYSTEMS



SMART MODULAR DESIGN

- STVS Modular handrail systems are assembled via a simple, no-weld construction method, reducing risk for corrosion, easy maintenance.
- Offering the lowest cost of product in lifetime. STVS Modular hot dip galvanized system gives 10 years anti corrosion warranty.
- Nice appearance

SAFETY AND COMPLIANCE

- No weld means no hot work permits, toxic fumes or site shutdown.
- Quality standardize and no dependence on welder skill on site.
- We design, manufacture and tested our components fully compliant OSHA standards and TCVN standard.

LESS TIME ON SITE

- All systems designed for modular assembly and rapid, streamlined onsite installation.
- Our design eliminate the risk in 3Ds drawing and arrange the packing phase by phase so your installer can find the parts and install easily.



MODULAR

Ha Duy Phien St | 700000 Ho Chi Minh City | Vietnam
Hotline: +84 938 770 765 | quyet.le@stvs.co | stvs.co

OUR INNOVATION



SMOOTHLY CONNECTOR

At STVS Modular, we gave ourselves the challenge of significantly reducing large gaps, to come up with ultimate sleek, stylish, streamlined and safe solution.



PE POWDER COATING PAINTING FINISHING

The handrail can apply fully powder coating paint finish including clamp fitting. We only use high quality, FREE LEAD from INTERPON powder. This brings high quality finishing, good at corrosion resistant and less faded color.



KAG – TOP BAR

STVS is a partner of ACUSAFE Australia - KAG top rail is the most tested and certified handrail in the world. With ALS global mechanical tests resulting in the KAG tube out performing standard tube be a combined 20% in load, crush and bend tests. Performance test resulting in a minimum 80% more grip in wet conditions, minimum 160% more grip in dry conditions and minimum 300% more grip in oils conditions.



SMOOTHLY MANDREL BEND

Unlike traditional welding methods that use elbow weld with the tube. This brings ugly looking and non-strength joint of the handrail.

STVS Modular invest high quality heavy mandrel bending machine. The mandrel bending technology give beautiful and smoothly bending angle. The connection no-weld make sure all the joint strong.

APPLICATION



ROOF HANDRAIL



STAIRCASE HANDRAIL



MEZANINE HANDRAIL



WALK WAY HANRAIL



WATER TREATMENT HANDRAIL



RIVER/LAKE HANDRAIL



PLATFORM HANDRAIL



PAKING AREA



LANDSCAPE HANDRAIL

TESTED HANDRAIL SYSTEMS

DESIGN & TESTED EXCEEDS OSHA STANDARD REQUIREMENTS (ON THE CONCRETE FLOOR)

[1910.23\(e\)\(3\)\(iv\)](#) - The anchoring of posts and framing of members for railings of all types shall be of such construction that the completed structure shall be capable of withstanding a load of at least 200 pounds (90.72 Kg) applied in any direction at any point on the top rail.



FOCUS PULL 200 KG INTO MIDDLE OF TOP RAIL WITHIN 2 MINUTES



**PULL 150 KG INTO MIDDLE POST
RESULT NO CHANGE SHAPE**

SGS

Test Report

No. VNHL1907012485HG

Date: August 23, 2019

Page 1 of 6

STVS CO., LTD

37 HOA MAI, WARD 2, PHU NHUAN DISTRICT, HO CHI MINH CITY, VIETNAM

The following sample(s) was/were submitted and identified by the client as:

SGS Job No. : VNHL1907012485HG

Sample Description : ASSEMBLY HANDRAIL "(LAN CAN LAP RAP)"

Color : "MA KEM" (GALVANIZED)

Characteristic : "THEP MA KEM NHUNG NONG"

Style / Item No. : CP32HB3P0G0

Date of Production : 06/2019

Manufacturer : STVS CO., LTD

Buyer : STVS CO., LTD

Country of Origin : VIET NAM

Country of Destination : WORLD WIDE

Other Information : ASSEMBLY HANDRAIL
PIPE DIMENSION: 42.2x3.2mm
POST CENTRE DISTANT: 1500mm
HEIGHT: 1050mm
HORIZONTAL BARS QUANTITY: 2 BARS
ANCHOR BOLT: M12-100
FINISHING: HOT DIP GALVANIZED
MANUFACTURE: STVS CO., LTD

Sample Receiving Date : JULY 29, 2019

Final confirmed Date : JULY 29, 2019

Testing Period : JULY 29, 2019 TO AUGUST 05, 2019

Test Requested : SELECTED TEST (S) AS REQUESTED BY CLIENT.

Test Results : PLEASE REFER TO NEXT PAGE(S).

This document is issued by the Company subject to its General Conditions of Service printed overleaf, available on request or accessible at <http://www.sgs.com/en/Terms-and-Conditions.aspx>, and, for electronic format documents, subject to Terms and Conditions for Electronic Documents at <http://www.sgs.com/en/Terms-and-Conditions/Terms-and-Conditions.aspx>.

Attention is drawn to the limitations of liability, indemnification and jurisdiction issues defined therein. Any holder of this document is advised that information contained hereon reflects the Company's findings at the time of its intervention only and within the limits of Client's instructions, if any. The Company's sole responsibility is to its Client and this document does not exonerate parties to a transaction from exercising all their rights and obligations under the transaction documents. This document cannot be reproduced except in full, without prior written approval of the Company. Any unauthorized alteration, forgery or falsification of the content or appearance of this document is unlawful and offenders may be prosecuted to the fullest extent of the law.

Unless otherwise stated the results shown in this test report refer only to the sample(s) tested and such sample(s) are retained for 90 days only.

SGS Vietnam Ltd Office: 198 Nguyen Thi Minh Khai St, District 3, Ho Chi Minh City, Vietnam t (84-28) 3935 1920 f (84-28) 3935 1921 www.sgs.com
Lab: Lot III/21, 19/5A St, Industrial Group III, Tan Binh IZ, Tan Phu District, HCMC, S.R. Vietnam t (84-28) 3816 0999 f (84-28) 3816 0996

Member of the SGS Group (SGS SA)

SGS

Test Report

No. VNHL1907012485HG

Date: August 23, 2019

Page 2 of 6

Signed for and on behalf of
SGS Vietnam LTD



Wong Cho Wing
Hardline and E&E Lab Manager

This document is issued by the Company subject to its General Conditions of Service printed overleaf, available on request or accessible at <http://www.sgs.com/en/Terms-and-Conditions.aspx>, and, for electronic format documents, subject to Terms and Conditions for Electronic Documents at <http://www.sgs.com/en/Terms-and-Conditions/Terms-and-Conditions.aspx>.

Attention is drawn to the limitations of liability, indemnification and jurisdiction issues defined therein. Any holder of this document is advised that information contained hereon reflects the Company's findings at the time of its intervention only and within the limits of Client's instructions, if any. The Company's sole responsibility is to its Client and this document does not exonerate parties to a transaction from exercising all their rights and obligations under the transaction documents. This document cannot be reproduced except in full, without prior written approval of the Company. Any unauthorized alteration, forgery or falsification of the content or appearance of this document is unlawful and offenders may be prosecuted to the fullest extent of the law.

Unless otherwise stated the results shown in this test report refer only to the sample(s) tested and such sample(s) are retained for 90 days only.

SGS Vietnam Ltd Office: 198 Nguyen Thi Minh Khai St, District 3, Ho Chi Minh City, Vietnam t (84-28) 3935 1920 f (84-28) 3935 1921 www.sgs.com
Lab: Lot III/21, 19/5A St, Industrial Group III, Tan Binh IZ, Tan Phu District, HCMC, S.R. Vietnam t (84-28) 3816 0999 f (84-28) 3816 0996

Member of the SGS Group (SGS SA)

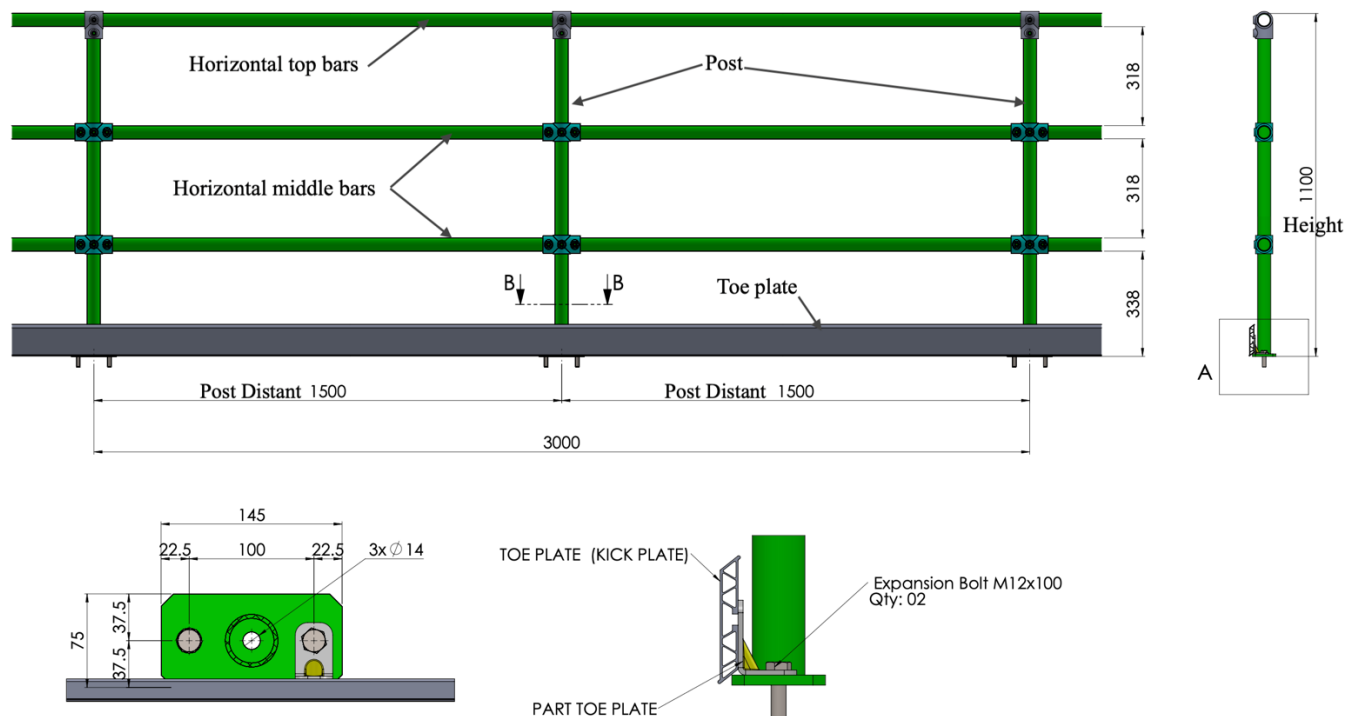


MODULAR

Ha Duy Phien St | 700000 Ho Chi Minh City | Vietnam
Hotline: +84 938 770 765 | quyet.le@stvs.co | stvs.co

TECHNICAL SPECIFICATION

DIMENSION:



HEIGHT	1100mm	
POST DISTANT	1500mm (+/-7%)	
FLANGE	145x75x8mm 120x120x8mm	
TOE PLATE	107mm height x 14mm thickness	
STANDARD	OSHA	TCVN
Post section	D42.4x3.2mm	D42.4x2.5mm
Horizontal bars section	D42.4x3.2mm	D42.4x2.0mm
Connection bolt on steel	M14-50-8.8	M12-50-8.8
Connection bolt on concrete	Fischer/Hilti M12-100	

STVS reserves the right to make product changes without prior notice. We do not accept any responsibility for mistakes, inaccuracies and/or printing errors.

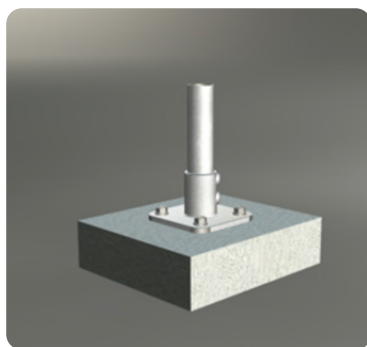
2 HORIZONTAL BARS – 2HB	3 HORIZONTAL BARS – 3HB
Condition: Keep spacing = <500mm	More safe for handrail

CONFIGURATION:



TOP MOUNT 1 (TM1)

Connect to the top of concrete/steel surface by 2 bolt set/ expansion anchor bolt



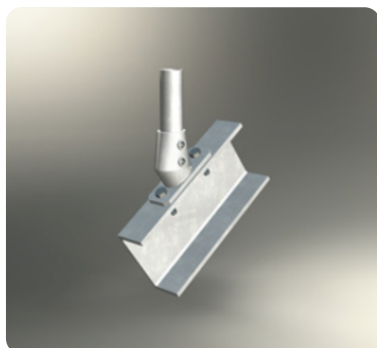
TOP MOUNT 2 (TM2)

Connect to the top of concrete/steel surface by 2 bolt set/ expansion anchor bolt



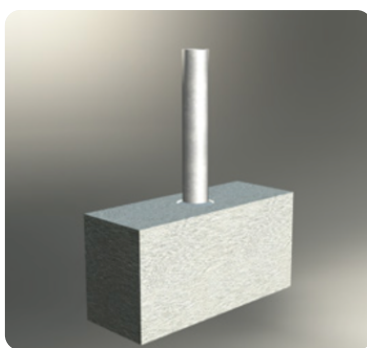
SIDE MOUNT 1 (SM1)

Connect to the C beam of the steel by 2 bolt set



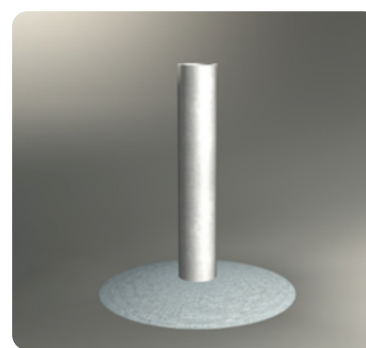
ANGLE MOUNT 1 (AM1)

Connect to the angle surface of steel/ concrete by 2 bolt-set or expansion anchor bolt



BURIED MOUNT 1 (BM1)

Buried in to concrete with the deep 200mm



BURIED MOUNT 2 (BM2)

Buried in to the ground with deep 500mm. Holes diameter 400mm, deep 500mm

FINISHING:

FINISHING TYPE:

- **G0:** Polyester powder coating paint on mild steel
- **G1:** Polyester powder coating paint on galvanized steel.
- **G2:** Hot dip galvanized finishing
- **G3:** Hot dip galvanized finishing + Polyester powder coating paint

Noted: (Tolerance of thickness +/-10%)

COLOR: standard color RAL 1033 - (optional on request) - **Beautiful, Smoothly Color**



RAL 1033



RAL9005



RAL9010

WARRANTY:

STVS MODULAR WARRANTY MATRIX – MODULAR HANDRAIL

PAINTING SPECIFICATION		C1	C2	C3	C4	C5	C5M
		Temperate low pollution Countryside. IN HOUSE	Temperate low pollution Countryside. >20Km from sea side	Urban and industrial atmospheres, moderate pollution or low salinity. >20Km from sea side	Industrial areas or coastal areas with moderate salinity. From 3 to 20 Km from seaside	Industrial, high humidity, aggressive atmosphere. From 0.5 to 3 Km from seaside	Coastal and offshore areas with high salinity. Less than 0.5 Km from seaside
FINISHING TYPE							
MODULAR HANDRAIL <i>Tolerances for the anti-corrosion guarantee are defined based on ISO 4628-3 for the degree of rusting grade and ISO 4628-2 for the degree of blistering.</i>	G0	5	5*	5*	N/A	N/A	N/A
	G1	5	5	5	3	N/A	N/A
	G2	10	10	10	10	5	N/A
	G3	10	10	10	10	5	5

Noted:

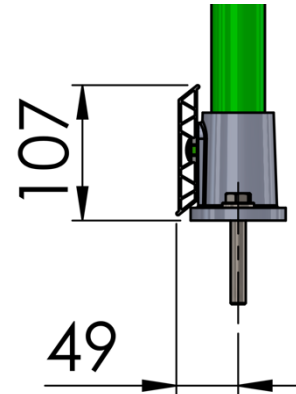
* Apply for inhouse application only

BANANA STEM TOE PLATE® SYSTEMS

STVS unique aluminum toeplate design. This design follow BS-EN ISO 14122 standard.

Extract: 7.1.7 A toe-plate with a minimum up stand of 100 mm shall be placed 10 mm maximum from the walking level and the edge of the platform.

The idea from banana stem structure give super strong toeplate also allows quick and easy installation. No drilling or welding, the structure allows for secure attachment with no exposed fasteners. Banana stem structure provides rigid non-buckling performance with the benefit of light weight, easy handling.



PRODUCT SPECIFICATION:

Dimension:	14mm thickness x 102mm height
Material:	Aluminum 6063 standard
Finishing:	Powder coating in silver color (Yellow color available on request)

ALUMINUM PLATE	CONNECTOR
	
<p>Huge advantage compared to the steel toe plate – lighter, stronger, much more beautiful and corrosion resistant.</p>	<p>The connector is flexible to install without tolerance worry. Hot dip galvanized finishing give high corrosion resistant ability</p>
<p>DURABLE - STRONGER – LIGHTER – EASY TO INSTALL</p>	



ASTRAEUS HANDRAIL

KEY FEATURES:

Application:



Design: Elegance design enhance the beauty of the site.

High quality coating give 10 years corrosion warranty.

Using hidden connection. No damage the finishing coating in installation progress, nice appearance. The life cycle of fence does not effected by accessories. Impossible to remove the panel once installed.

Easy & quick installation:

Easy angle management due to the linking systems. Applicable for all types of configurarions: Curves, Corners, Slopes, on walls... with the same standard products.

The connection made by SUS304 give long last quality.



PRODUCT TECHNICAL SPECIFICATION:

<u>PANEL</u>		<u>POST</u>	
Material:	Steel	Material:	Steel
Panel height:	1100 mm	Post distant:	1500 mm
Panel width:	1440 mm	Post section:	60x60x2.5mm
Horizontal bars section:	50x25x1.5mm	Post length:	1100mm
Horizontal bars quantity:	<u>3 bars</u>	Flange:	120x120x8mm
Vertical bars section:	Ø26 mmx1.2mm	Surface treatment:	Galvanized steel
Vertical bars distant:	Max 100mm		
Surface treatment:	Galvanized steel		

FINISHING:

Standard Color:
(other color available upon the request)



RAL9005



RAL9010



RAL 1033

- **G1:** STVS standard polyester powder coating.
- **G1 Plus:** Primer paint + STVS standard polyester powder coating.
- **G2:** Hot dip galvanized finishing

Noted: (Tolerance of thickness +/-10%)

WARRANTY:

STVS MODULAR WARRANTY MATRIX – ASTRAEURS HANDRAIL (YEARS)

PAINTING SPECIFICATION		C1	C2	C3	C4	C5	C5M
		Temperate low pollution Countryside. IN HOUSE	Temperate low pollution Countryside. >20Km from sea side	Urban and industrial atmospheres, moderate pollution or low salinity. >20Km from sea side	Industrial areas or coastal areas with moderate salinity. From 3 to 20 Km from seaside	Industrial, high humidity, aggressive atmosphere. From 0.5 to 3 Km from seaside	Coastal and offshore areas with high salinity. Less than 0.5 Km from seaside
FINISHING TYPE							
<u>ASTRAEURS</u> Tolerances for the anti-corrosion guarantee are defined based on ISO 4628-3 for the degree of rusting grade and ISO 4628-2 for the degree of blistering.	G1	10*	5	5	2	N/A	N/A
	G1 Plus	10	10	10	10	3	N/A
	G2	10	10	10	10	10	5

Noted:

* Apply for inhouse application only

INSTALLATION:

Principal:

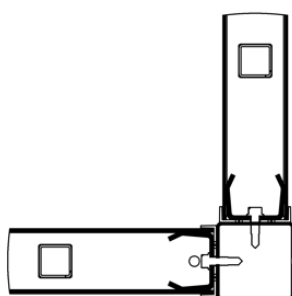


Screw-on "U" piece

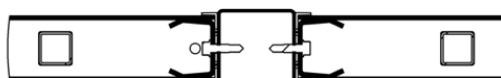


Slotted railings

Angle management:



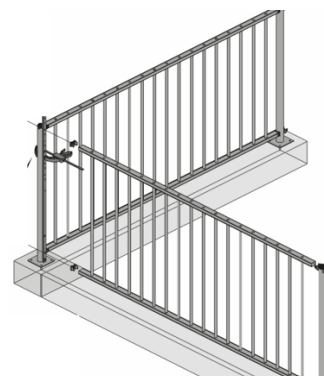
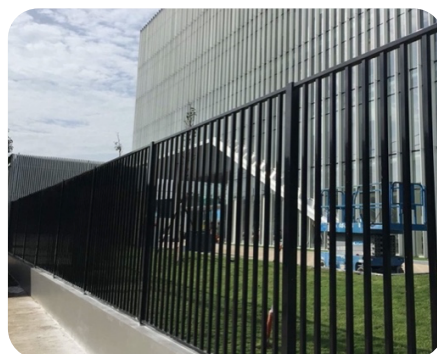
90° angle



180° angle



ASTRA RAILING FENCE



DURABLE & SECURITY

- Free maintenance. Low cost using
- STVS Modular professional coating know-how give **5 and 10 years** corrosion warranty that minimize the cost of the fence.
- Impossible to remove the panel once installed.

BEAUTIFUL

- Elegant looks that enhance the beauty of the site.
- Stainless steel hidden connector give strong and smooth appearance .
- High-end architecture powder coating finish.
- UV resistant reduce fading color.

EASY TO INSTALL

- Modular design that allow easy & quick installation
- Applicable for all types of configurations: Curves, Corners, Slopes, on walls... with the same standard products.

❖ DESIGN OPTIONS:



2 HORIZONTAL BARS

Apply with support infill to the ground



3 HORIZONTAL BARS

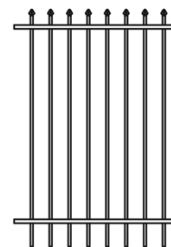
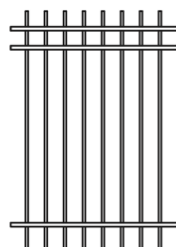
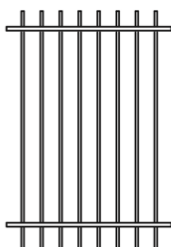
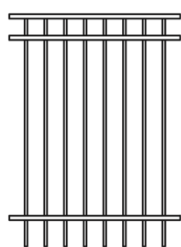
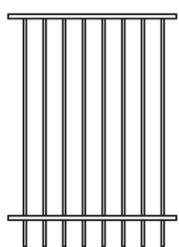
Apply without support infill to the ground or the fence height > 2.2m



PAINTING



HOT DIP GALVANIZE

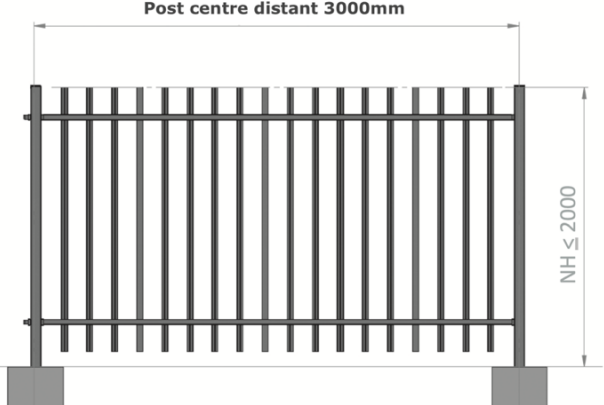
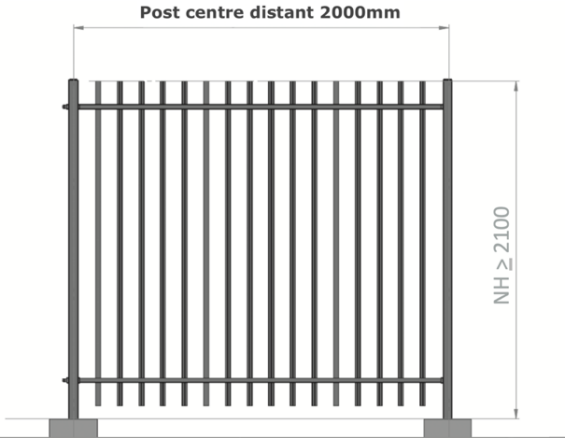
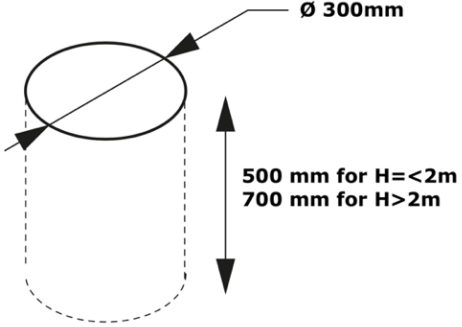
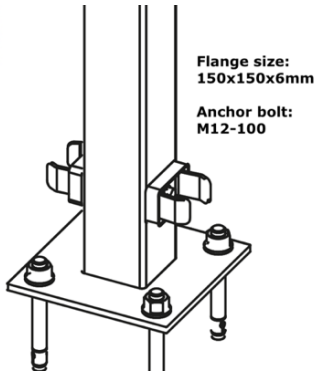

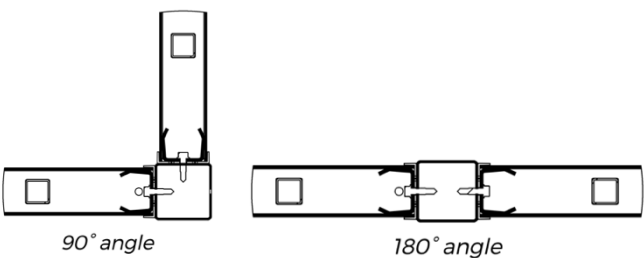


NON OVERSTANDING

OVERSTANDING

OVERSTANDING WITH PRESS SPEAR

Not apply for hot dip galvanized finish

	
POST DISTANT ($H \leq 2m$)	POST DISTANT ($H > 2.1m$)
	
BURRIED INTO GROUND	ON THE FLANGE
<p>Max height: 2.5m Recommend increase post section 75x75mm if $2.5mH \leq H \leq 3m$</p>	<p>Max Height: 2.0m Recommend burried post if $H > 2mH$</p>
 <p>Screw-on "U" piece Slotted railings</p>	 <p>90° angle 180° angle</p>
INSTALLATION PRINCIPAL	ANGLE MANAGEMENT

❖ DIMENSION:

VERTICAL BARS SECTION (Painting finishing)	Square section: 16x16x1.2 / 20x20x1.2 mm/ 25x25x1.2 Round section: D21x1.2, D26x1.2mm
VERTICAL BARS DISTANT (Face to face distant)	Standard: 110mm Economic: 130mm
HORIZONTAL BARS SECTION	Standard: 50x25x1.5mm
POST SECTION	Standard: 60x60x2 mm

NOMINAL HEIGHT (mm)	POST DISTANT (mm)	
	2000	3000 (STD)
	HORIZONTAL BARS Q'TY	
1000	2 bars as standard	Options: 2 or 3 bars
1200	2 bars as standard	Options: 2 or 3 bars
1500	2 bars as standard	Options: 2 or 3 bars
1600	2 bars as standard	Options: 2 or 3 bars
1800	2 bars as standard	Options: 2 or 3 bars
2000	2 bars as standard	Options: 2 or 3 bars
2200	Options: 2 or 3 bars	N/A
2400	3 bars only	N/A
3000	3 bars only	N/A
Note:	Post distant = 2000mm Apply 2 horizontal bar: NO need support infill	Post distant = 3000mm Apply 2 horizontal bar: need support infill Apply 3 horizontal bar: NO need support infill

FINISHING:

Standard Color:
(Other color available upon the request)



RAL9005



RAL9010



RAL 1033

- **G1:** STVS standard polyester powder coating.
- **G1 Plus:** STVS standard primer paint + STVS standard polyester powder coating.
- **G2:** Hot dip galvanized finishing

Noted: (Tolerance of thickness +/-10%)

❖ WARRANTY:

STVS MODULAR WARRANTY MATRIX – ASTRA RAILING

		C2	C3	C4	C5	C5M
PAINTING SPECIFICATION		Temperate low pollution Countryside. >20Km from sea side	Urban and industrial atmospheres, moderate pollution or low salinity. >20Km from sea side	Industrial areas or coastal areas with moderate salinity. From 3 to 20 Km from seaside	Industrial, high humidity, aggressive atmosphere. From 0.5 to 3 Km from seaside	Coastal and offshore areas with high salinity. Less than 0.5 Km from seaside
ASTRA FENCE <i>Tolerances for the anti-corrosion guarantee are defined based on ISO 4628-3 for the degree of rusting grade and ISO 4628-2 for the degree of blistering.</i>	G1	5	5	3	N/A	N/A
	G1 Plus	10	10	10	3	N/A
	G2	10	10	10	10	5

Noted:

* Corrosion warranty are not applied for accessories parts

CONDITION OF CORROSION

The anti-corrosion guarantee only covers rust-related faults. It is based on the European standard ISO 12944, which defines precise corrosivity categories.



APOLLO® SLIDING GATE



KEY FEATURES:

This single leaf sliding gate boasts the latest technology and such smooth and stable operation.

The gate frame is square hollow section steel with a choice of square, mesh or round vertical bar infill. The main gate beam is heavy duty steel that give to the gate a strong structure.

Available in a wide range of widths 3-12m and heights from 1-2.4m.

The STVS Modular sliding gate design has strong rail system with I structure and under ground base supporter that suitable for even heavy duty truck areas. The wheels are designed for heavy duty operate give a very smooth and long last operation.

The accessories was made in Euro with designed much more than the loading of the gate weight give a perfection in operation and allow easy manual or motor-driven operation.

This guarantees trouble-free open/close movements and reduces maintenance.

Gate surfaces are extremely robust with high quality galvanized or high quality marine coating finish give 10 years corrosion protection warranty.

- ❖ **Strong gate structure give high security.**
- ❖ **Euro design with elegant looks that enhance the beauty of the site.**
- ❖ **Top quality Euro made accessories give stable commissioning.**
- ❖ **Silence and very smoothly operation.**
- ❖ **Stable operation, low maintenance cost.**
- ❖ **High quality coating give 10 years corrosion protection warranty.**
- ❖ **2 years motor warranty for manufacturing failure**
- ❖ **10,000 cycle tested**



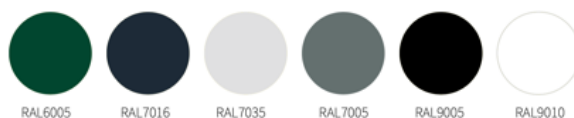
TECHNICAL SPECIFICATION

Dimension:

Nominal Passage	3000	4000	5000	6000	7000	8000	9000	10000	11000	12000
Frame section	75x75									
Infill	Square 25x25mm, Round D27mm, Mesh 50x100x6mm or customize according to the requirement									
Beam section	100x150								150x150	
Post	Install on the concrete post									

Leaf:	Single leaf
Opening:	Maximum 12mW
Operation:	Motorized/ Manual
Control:	Remote as standard Optional: push button,...
Safety device:	Infrared sensor, touch sensor, alarm light as optional
Finishing:	STVS standard marine coating Hot dip galvanized for rack cover, guiding and receiver

Color:



Other colours available upon request



JUPITER® SLIDING GATE



KEY FEATURES:

- ❖ Strong gate structure give high security.
- ❖ Euro design with elegant looks that enhance the beauty of the site.
- ❖ Top quality Euro made accessories give stable commissioning.
- ❖ Silence and very smoothly operation.
- ❖ Stable operation, low maintenance cost.
- ❖ High quality **marine coating** give 10 years corrosion protection warranty.
- ❖ 10,000 cycle tested



TECHNICAL SPECIFICATION

Dimension:

Nominal Passage	3000	4000	5000	6000	7000	8000	9000	10000	11000	12000
Frame section	75x75									
Infill	Square 25x25mm, Round D27mm, Mesh 50x100x6mm or customize according to the requirement									
Beam section	100x150								150x150	
HEIGHT	POST SECTION									
1000	100x100x3									
1200										
1500										
1600										
1800	150x150x3					150x150x5				
2000										
2200										

Leaf:

Single/ Double leaves

Opening:

Maximum 12mW for single leaf, 20mW for double leaves

Operation:

Motorized/ Manual

Control:

Remote as standard Optional: push button,...

Safety device:

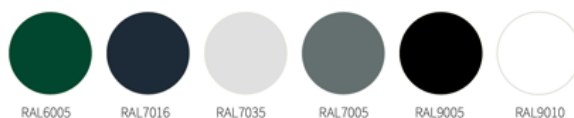
Infrared sensor, touch sensor, alarm light as optional

Finishing:

STVS standard marine coating

Hot dip galvanized for rack cover, guiding and receiver

Color:



Other colours available upon request



JUPITER PLUS® SLIDING GATE

KEY FEATURES:

This single or double leaf sliding gate boasts the latest technology and such smooth and stable operation.

The gate frame is square hollow section steel with a choice of square, mesh or round vertical bar infill. The main gate beam and post is heavy duty steel that give to the gate a strong structure.

Available in a wide range of widths **3 -15m** and heights from 1-2.2m.

The STVS Modular sliding gate design has strong rail system with I structure and under ground base supporter that suitable for even heavy duty truck areas. The wheels are designed for heavy duty operate give a very smooth and long last operation.

The accessories was made in Euro with designed much more than the loading of the gate weight give a perfection in operation and allow easy manual or motor-driven operation.

This guarantees trouble-free open/close movements and reduces maintenance.

Gate surfaces are extremely robust with high quality galvanized or high quality coating finish that give 10 years corrosion protection warranty.

- ❖ **Strong gate structure give high security.**
- ❖ **Euro design with elegant looks that enhance the beauty of the site.**
- ❖ **Wide nominal opening (maximum 15 meters).**
- ❖ **Top quality Euro made accessories give stable commissioning.**
- ❖ **Silence and very smoothly operation.**
- ❖ **Stable operation, low maintenance cost.**
- ❖ **High quality coating give 10 years corrosion protection warranty.**
- ❖ **2 years motor warranty for manufacturing failure**
- ❖ **5,000 cycle tested**

TECHNICAL SPECIFICATION

Dimension:

Nominal Passage (mm)	12000	13000	14000	15000
Frame section (mm)	75x75			
Infill	Square 25x25mm, Round D27mm, Mesh 50x100x6mm or customize according to the requirement			
Beam section (mm)	150x150			
HEIGHT	DOUBLE POST			
1000	100x100x3			
1200				
1500				
1600	150x150x3			
1800				
2000	150x150x5			
2200				

Leaf:

Single/ Double leaves

Opening:

Maximum 15mW for single leaf, 25mW for double leaves

Operation:

Motorized

Control:

Remote as standard Optional: push button,...

Safety device:

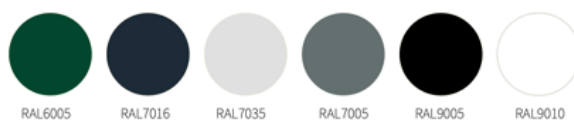
Infrared sensor, touch sensor, alarm light as optional

Finishing:

STVS standard marine coating

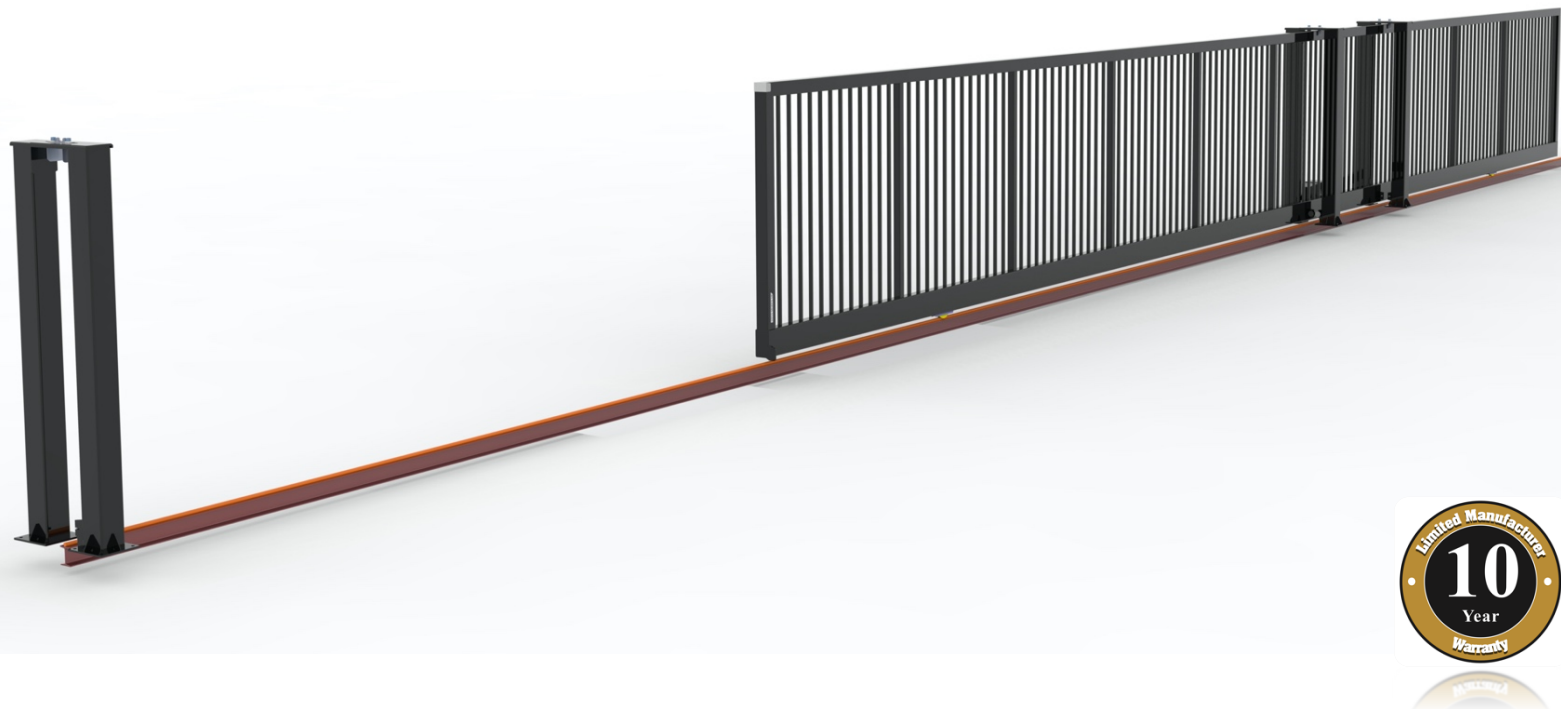
Hot dip galvanized for rack cover, guiding and receiver

Color:



Other colours available upon request

STVS reserves the right to make product changes without prior notice. We do not accept any responsibility for mistakes, inaccuracies and/or printing errors.



THE SUN® SLIDING GATE

KEY FEATURES:

This single leaf sliding gate boasts the latest technology, such smooth and stable operation.

The Sun sliding gate design for UNIQUE and LARGER opening require with stable operation purpose. The gate structure is heavy duty that allow the opening up to **18m** and heights from 1-2.4m.

The STVS Modular sliding gate design has strong rail system with I structure and under ground base supporter that suitable for even heavy duty truck areas. The wheels are designed for heavy duty operate give a very smooth and long last operation.

The accessories was made in Euro with designed much more than the loading of the gate weight give a perfection in operation and allow smooth operation on motor-driven.

This guarantees trouble-free open/close movements and reduces maintenance.

All gate surfaces are extremely robust with high quality marine PU coated finishes (in a wide choice of colors).

- ❖ **Strong gate structure give high security.**
- ❖ **Euro design with elegant looks that enhance the beauty of the site.**
- ❖ **Wide nominal opening up to 18m meters.**
- ❖ **Top quality Euro made accessories give stable commissioning.**
- ❖ **Silence and very smoothly operation.**
- ❖ **Stable operation, low maintenance cost.**
- ❖ **High quality coating give 10 years corrosion protection warranty.**
- ❖ **2 years motor warranty for manufacturing failure**

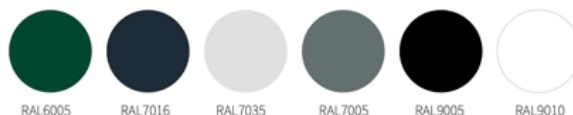
TECHNICAL SPECIFICATION

Dimension:

Nominal Passage (mm)	15000	16000	17000	18000
Beam section (mm)	200x200			
Frame section (mm)	100x100			
Infill	Square 25x25mm, Round D27mm, Mesh 50x100x6mm or customize according to the requirement			
Post section (mm)	Double Post - 150x150			

Leaf:	Single/ Double leaves
Opening:	Maximum 18mW for single leaf, 30mW for double leaves
Operation:	Motorized
Control:	Remote as standard. Optional: push button,...
Safety device:	Infrared sensor, touch sensor, alarm light as optional
Finishing:	STVS standard marine coating Hot dip galvanized for rack cover, guiding and receiver

Color:



Other colours available upon request



JUPITER CANTILEVER SLIDING GATE

KEY FEATURES:

This single or double leaf sliding gate boasts the latest technology and such smooth and stable operation.

The gate frame is square hollow section steel with a choice of square, mesh or round vertical bar infill. The main gate beam and post is heavy duty steel that give to the gate a strong structure.

Available in a wide range of widths 3-9m and heights from 1-2.2m.

The accessories was made in Euro with designed much more than the loading of the gate weight give a perfection in operation and allow easy manual or motor-driven operation.

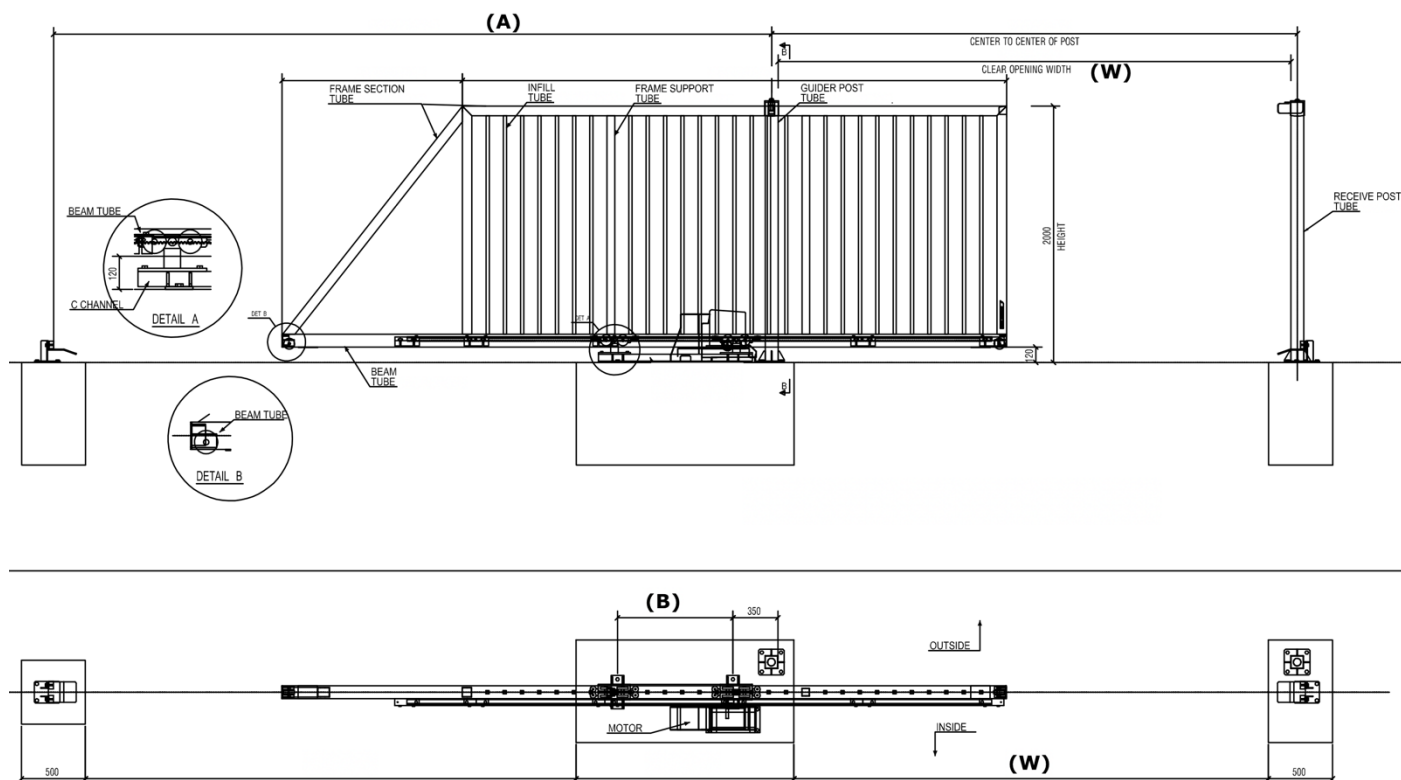
In our system, we only use high-strength polyamide rollers with oversized running surfaces and thus guarantee extremely smooth

running and durability, as these were specially developed for the requirements of cantilever sliding gates.

This guarantees trouble-free open/close movements and reduces maintenance.

All gate surfaces are extremely robust with high quality galvanized or high quality marine PU coated finishes (in a wide choice of colors).

- **Strong structure gate**
- **High quality Euro made accessories**
- **Stable and low maintenance design**
- **Heavy duty and strong structure.**
- **Silent and very smooth operation**
- **Easily integrated with security options (Sensor, alarm light, intercom or phone)**
- **10 years anti corrosion at C4**



TECHNICAL SPECIFICATION

RANGE:

JUPITER CANTILEVER SLIDING GATE

W	A	B
3000	4500	1000
4000	5900	1350
5000	7200	1700
6000	8500	2000

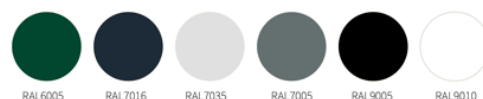
W	A	B
7000	9900	2350
8000	12000	2700
9000	13000	3030

Material:	Heavy duty steel
Nominal height:	1000-2200mm
Nominal width:	3000-9000mm
Guiding post section:	SP 150x150mm
Receiving post section:	SP 150x150mm
Infill:	Square bars 25x25mm, Round bars dia 27mm,
Beam section:	150x150mm, Max 9mW 100x100mm, Max 4mW
Frame section:	75x75mm
Support frame section:	60x60mm
Leaf:	Single/ Double
Operation:	Manual/Motorized
Safety device:	Infrared sensor, touch sensor, alarm light as optional

Finishing:

STVS marine coating
Hot dip galvanized for rack cover, guiding and receiver

Color:



Other colours available upon request

Control:

Remote as standard, option push button, intercom



TELESCOPIC SLIDING GATE



KEY FEATURES:

The telescopic sliding gate design for small sliding back space and stable purpose. The gate structure and accessories is unique and know how design by STVS Modular.

The STVS Modular sliding gate design has strong rail system with I structure and under ground base supporter that suitable for even heavy duty truck areas. The wheels are designed for heavy duty operate give a very smooth and long last operation.

The accessories was made in Euro with designed much more than the loading of the gate weight give a perfection in operation and allow smooth operation on motor-driven.

This guarantees trouble-free open/close movements and reduces maintenance.

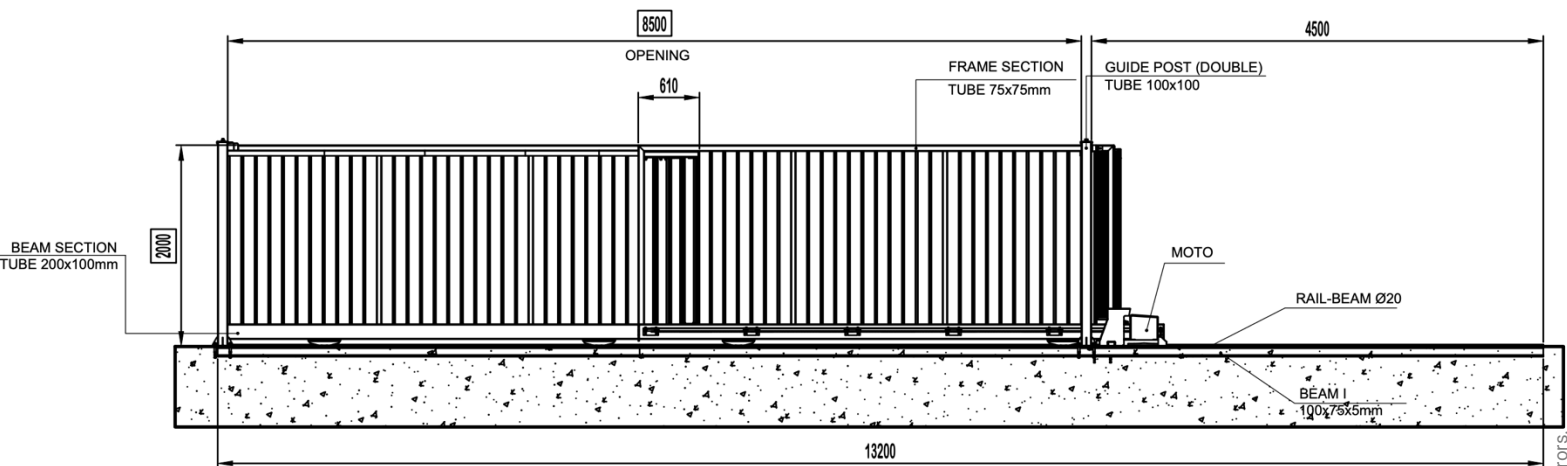
All gate surfaces are extremely robust with high quality galvanized or high quality marine PU coated finishes (in a wide choice of colors).

- ❖ **Small sliding back space needed**
- ❖ **Stable and low maintenance design**
- ❖ **Opening width up to 12 meters**
- ❖ **Easily integrated with security options (Sensor, alarm light, intercom or phone)**
- ❖ **2 years warranty for motors and 10 years anti corrosion**



M O D U L A R

Ha Duy Phien St | 700000 Ho Chi Minh City| Vietnam
Hotline: +84 938 770 765 | quyet.le@stvs.co | stvs.co



TECHNICAL SPECIFICATION

RANGE: TELESCOPIC SLIDING GATE

Material:	Heavy duty steel
Nominal height:	1000-2200mm
Nominal width:	3000-12000mm
Guiding post section:	DP 150x150mm Or DP 100x100mm
Infill:	Square bars 25x25, Round bars dia 25, Wire mesh 50x50
Beam section:	100x200mm Or 100x150mm
Frame section:	75x75mm
Support frame section:	60x60mm

Leaf:	Single/ Double
Operation:	Motorized/Manual
Finishing:	STVS marine coating Hot dip galvanized for rack cover, guiding and receiver



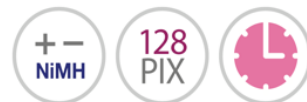
Other colours available upon request

Control:	Remote as standard, option push button, intercom
-----------------	---

Safety device:	Infrared sensor, touch sensor, alarm light as optional
-----------------------	---

MOTOR DRIVEN

- **Motor speed up to 8m/min for gate size: 16-18mW (Sun).**
- **Motor speed up to 9m/min for gate size: 10-12mW**
- **Motor speed up to 13m/min for gate size: 3-9mW.**
- **Slows at the start and end of the cycle (smooth jolt-free operation)**
- **Up to 40 cycles per hour for 6m openings (1 cycle = 1 opening + 1 closing)**
- **Not affected by adverse weather conditions**
- **24 VDC backup battery ensures continued operation in the event of a supply failure**
- **Lifetime lubrication**
- **Includes set of cells for lightweight vehicles**
- **2-year guarantee**



The automation is made up of a self-locking gear motor controlled by magnetic encoder with an in-built:

- Electronic programmer;
- 433MHz FM receiver;
- slot-in battery charger;
- NiMH batteries.



MANUAL RELEASE SLX3024CB



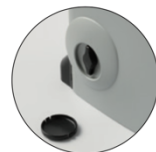
SELF-PROGRAMMING MONITORED BY AN LCD GRAPHICS DISPLAY



MANUAL RELEASE SLX1524CB



MANUAL RELEASE SLX24DRACO



MANUAL RELEASE SL524

The electronic programmer is factory fitted with a graphic LCD display (128 x 128 pixels) with backlighting in six different languages. The menu allows you to rapidly set the system parameters including: the sequential button mode, automatic reclosing, warning lamp pre-flashing, intermittent warning lamp activation, indicator light and photoelectric cell function setting etc.

The electronics card, thanks to the presence of the real-time clock, allows you to set 10 events (shown on the display) and these events permit you to regulate the opening and closing of the motor at different times during the day within 3 weekly time bands (Mon- Fri, Sat-Sun, Mon-Sun); the events can be enabled or disabled (during holiday periods) either from the menu or by means of a radio channel. The appliance is fitted with a safe and secure manual release system activated by a personalised key.



SWING GATE

RANGE:

MANUAL SWING GATE

Material:

Steel

Nominal height:

1000-2400mm

Nominal width:

900-10000mm

Infill:

Square bars 25x25,
Round bars dia 27,
Wire mesh

Leaf:

Single/ Double

Operation:

Manual

Warranty:

10 years anti corrosion

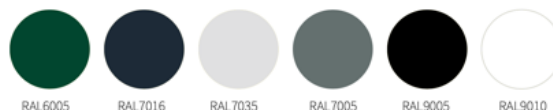
Hardware:

High quality Euro made

Finishing:

STVS marine coating standard

Color:



Other colours available upon request

Nominal Passage (mm)		1000	1200	1500	2000	2500	3000	3500	4000	4500	5000						
Frame section (mm)		50x50x2			50x50x3		75x75x3			100x100x2.5							
Infill section (mm)		25x25															
Space under gate leaf (mm)		80															
Nominal height	Post length	Post section (mm)															
1000	1500	75x75x3			100x100x3			150x150x5				200x200x12					
1200	1700																
1500	2000																
1800	2500																
2000	3000																



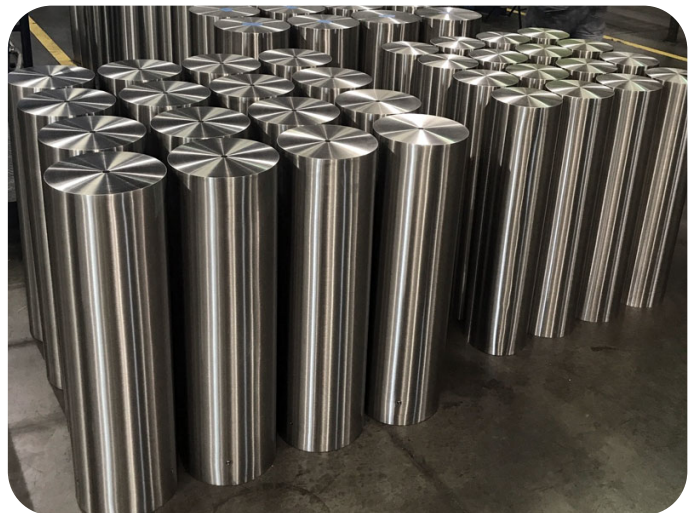


BOLLARDS



STEEL BOLLARDS

- ❖ Strong and beautiful appearance
- ❖ Super round top
- ❖ Very smooth and shine



STAINLESS STEEL BOLLARDS

- ❖ Hairline finish
- ❖ Flat top design
- ❖ Inner flange or burried

STVS STANDARD LIQUID COATING WARRANTY

The anti-corrosion guarantee only covers rust-related faults. It is based on the European standard ISO 12944, which defines precise corrosivity categories.

STVS MODULAR WARRANTY MATRIX – <u>LIQUID COATING</u>						
PAINTING SPECIFICATION		C2	C3	C4	C5	C5M
		Temperate low pollution Countryside. >20Km from sea side	Urban and industrial atmospheres, moderate pollution or low salinity. >20Km from sea side	Industrial areas or coastal areas with moderate salinity. From 3 to 20 Km from seaside	Industrial, high humidity, aggressive atmosphere. From 0.5 to 3 Km from seaside	Coastal and offshore areas with high salinity. Less than 0.5 Km from seaside
LIQUID COATING <i>Tolerances for the anti-corrosion guarantee are defined based on ISO 4628-3 for the degree of rusting grade and ISO 4628-2 for the degree of blistering.</i>	STVS Marine coating	10	10	10	5	N/A
	Epoxy coating	2	2	2	N/A	N/A
	Hot Dip Galvanized	10	10	10	10	5

CONDITION OF CORROSION

The anti-corrosion guarantee only covers rust-related faults. It is based on the European standard ISO 12944, which defines precise corrosivity categories.

Noted:

* Corrosion warranty are not applied for accessories parts

This image shows a single sheet of white paper with horizontal ruling lines. The lines are evenly spaced and run across the width of the page. There are no margins, text, or other markings on the paper.



Factory: Ha Duy Phien Street, Cu Chi District, Ho Chi Minh
city, 700000, Vietnam
Hotline: +84 938770765

STV

M O D U L A R