

STVS MODULAR

2023

Professional on modular handrail, fence and gate systems



Factory: Ha Duy Phien Street, Cu Chi District, Ho Chi Minh
city, 700000, Vietnam
Hotline: +84 938770765 // Email: contact@stvs.co

STV

MODULAR



M O D U L A R

SAFETY . DURABLE . MODULAR . ELEGANT



M O D U L A R

Ha Duy Phien St | 700000 Ho Chi Minh City | Vietnam
Hotline: +84 938 770 765 | quyet.le@stvs.co | stvs.co

ABOUT STVS MODULAR

STVS Modular is Vietnam leading manufacturing of innovative modular handrail, Modular railing fence and Gate systems.

At STVS Modular, we do things differently! We're always on the lookout for better ways to solve the unique obstacles construction projects face, so that our customers can focus on doing what they do best.

Our various range of handrails, guardrail systems for commercial and industry are specifically designed for a wide range of industrial, commercial and civil applications. All our modular handrail systems comply with OSHA standard or TCVN standard, so you know you're always covered.



Our range of proprietary modular designs are manufactured in house and designed to save our customers time and money, and our personalised approach to customer service ensures you're looked after from concept to installation. Our barrier systems are fit for purpose, simple to use, and able to be modified to cater for any unique requirements, and our streamlined ordering and installation process is designed with customer convenience in mind.

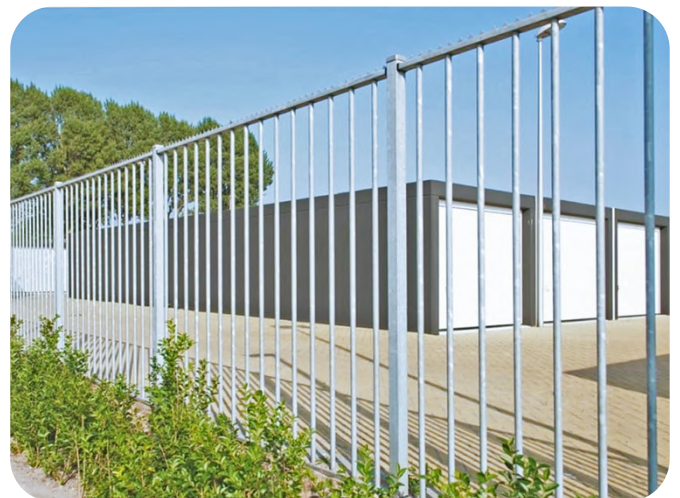
© STVS MODUAR



The sliding gate and swing gate boasts the latest technology and such smooth and stable operation. Our know-how about coating and connection technology give beautiful finishing and high corrosion resistant ability for products. This give a great quality and good looking for the products in long term.

The Modular railing fence system with elegant design for high profile locations, Easily combined with entrance gates and detection systems. Secure and suitable for all terrains. Moisture and dirt resistant surfaces. This attractive fence is ideal for office buildings, schools, and other high-visibility location

From initial design to final quality assurance processes, we make sure our goods are reliable and exceptional.



PRODUCTS RANGE

Sliding gate



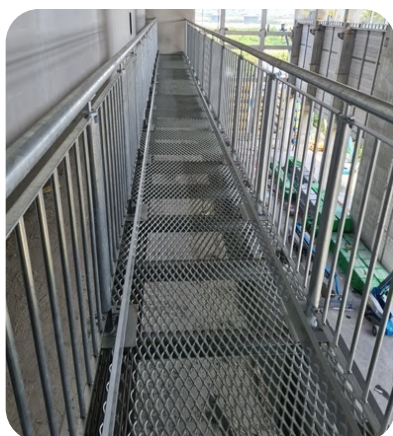
Swing gate



Modular railing fence



Modular handrail



Architecture balustrade



REFERENCE IN THE MARKET



HEINEKEN BEER FACTORY



MERIDIEN FACTORY



MARUBENI KRAFT FACTORY



BW LOGISTIC



VREC FACTORY



SPECTRE FACTORY



LOGOS FACTORY



PANASONIC FACTORY



CAMSO FACTORY



OTSUKA TECHNO FACTORY





PROJECT IN NEWZEALAND



PROJECT IN SINGAPORE



PROJECT SINGAPORE



MARUBENI FACTORY



TUNAL FISH



BEKEART FACTORY



PEPPERL + FUCHS

COATING TECHNOLOGY

A photograph of an industrial facility, likely a coating plant. In the foreground, a series of white, cylindrical pipes or rods are arranged in a row, receding into the distance. The background shows a large industrial structure with blue and orange metal beams and a corrugated metal roof. The text "COATING TECHNOLOGY" is overlaid in white, bold, sans-serif font, flanked by two horizontal yellow bars.

THE RIGHT PROTECTION SOLUTION FOR EVERY PROJECT

The speed of corrosion are different base on the paint process technology, material used and environment in which it is located. STVS Coating systems with 3 types of coating, each have their own characteristics that answer to these variables. They cover substrates in multiple levels of corrosivity, for different lifetime expectations, allowing us to perfectly meet each product's specific protection requirements and application limitations

Weather conditions / Atmospheric corrosivity according EN ISO 12944-2 standard

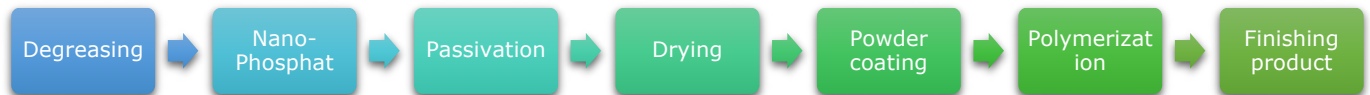
Category	Exterior	Interior
C1		Heated building with a clean atmosphere such as office, shop, school, hotel...
C2	Mainly rural regions, >20 Km from Sea side	Buildings which are not heated (storage facilities, halls)
C3	Industrial areas and inshore areas of low salinity, > 20 Km from Sea side	Production halls to facilities (laundries, breweries, dairies)
C4	Industrial areas and inshore areas of medium salinity, From 3-20 Km to the Sea side	Chemical plants (swimming pools, ship yards)
C5	Industrial areas of high humidity and aggressive atmosphere, From 500m-3Km to the Sea side	Areas of almost constant condensation and high contamination.
CX	Offshore areas of high salinity or industrial areas of extremely high humidity, Less 500m to the Sea side	Buildings and areas of almost constant condensation and aggressive contamination

GENERAL WARRANTY MATRIX (YEAR)							
LEVEL OF ENVIRONMENT		C1	C2	C3	C4	C5	CX
FINISHING TYPE							
Tolerances for the anti-corrosion guarantee are defined based on ISO 4628-3 for the degree of rusting grade and ISO 4628-2 for the degree of blistering.	G1	10	5	5	3 or 5 or N/A*	N/A	N/A
	G1 PLUS	15	15	15	10	5	2
	G1 E. PLUS	15	15	15	10	5	2

* 3 Year for ASTRA fence, 5 years for Unique fence, N/A for Gate

STVS COATING SYSTEMS

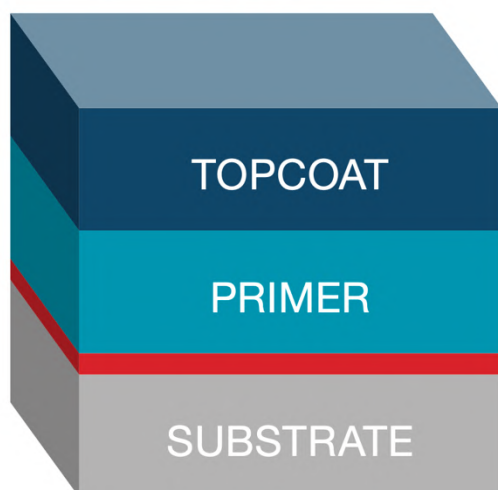
❖ G1 – Single layer coating



❖ G1 PLUS – Double layer coating



❖ G1 E.PLUS – Double layer E-coating (Comming soon)



UV, abrasion and mechanical resistance (80-100 µm)

Corrosion protection (100-120 µm)

PRE-TREATMENT

In the corrosive environment, products need to perform safely and reliably, you need to protect both their function and their exterior. We are convinced that the best solution to do so is a powder system comprising of a primer plus topcoat. The system warrantied 15 years corrosion protection in level C2, C3, and 5 years up to level C5

THE BENEFITS OF STVS COATING SYSTEMS

- ❖ **High-end and Elegant looking for the Site in long term**
- ❖ **Low cost maintenance**
- ❖ **UV resistance**
- ❖ **Superior longevity**

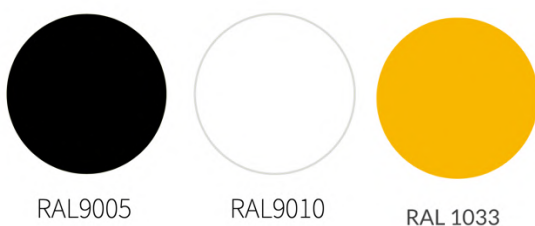
Our durable coating systems are environmentally friendly and can deliver superior longevity for C4/5 environments compared to other coating solutions.

❖ **Sustainable Development:**

Powder coating is the ecological answer, the essential coating of Sustainable Development: it's VOC-free and contains no solvents or toxic components.

- ❖ **Robust corrosion protection performance up to 5 years in corrosivity level C5 and 15 years in corrosivity level C2, C3**

Standard colors:



Other color upon request



ARCHITECTURE HANDRAIL

The image features a modern staircase with a sleek, stainless steel handrail and a glass balustrade. The handrail is made of polished metal and follows the curve of the stairs. The glass panels are held in place by stainless steel brackets and spigots. In the background, there is a wooden door with a glass insert, set within a frame of glass and metal. The overall aesthetic is clean and contemporary.



S-LUX ARCHITECTURE HANDRAIL

For a clean and graceful architecture handrail system, the S-LUX system is your first choice. Crafted from stainless steel or mild steel tubing, this system is ideal for a huge variety of applications, wherever low maintenance and high functionality is required.

The S-LUX range is produced in 3 different designs to accommodate any situation:

50 Series:

50mm diameter tubing suitable for medium loading applications.

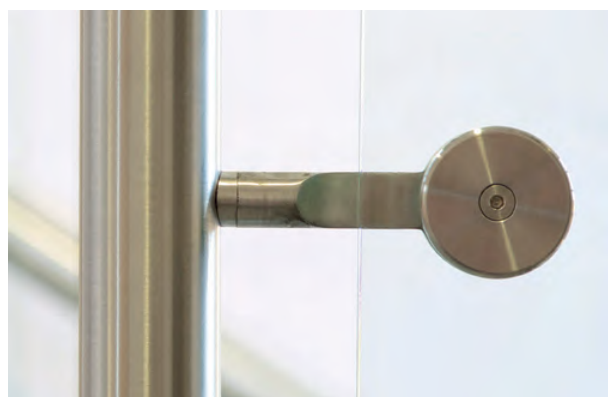
60 Series:

60mm diameter tubing suitable for high loading applications.

70 Series:

70mm diameter tubing suitable for high loading applications, such as crowd control.

The S-LUX are design and tested fully compliant to BS6180 standard.



INFILL



Glass



Vertical bars



Perforated panel

GLASS:

10mm tempered glass is proposed as standard. However, tempered glass should be specified only when its inherent characteristics are understood and accepted.

In high risk areas, tempered glass panels laminated glass should be considered.

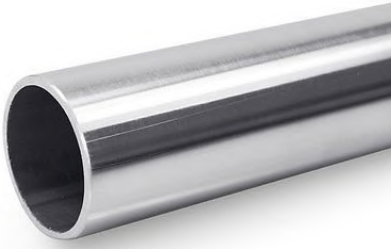
This is normally two pieces of glass bonded together by a special interlayer. If broken, the glass is retained by the interlayer and as well supported in the S-LUX balustrade it has an increased likelihood of staying in place



VERTICAL BAR PANELS

The popular vertical bar panel system provides a cost effective and robust option designed for utility areas and rear stairs. The vertical bar panel is a maintenance free and fully compliant infill well suited to all public buildings.

FINISHING



HAIRLINE POLISH STAINLESS STEEL



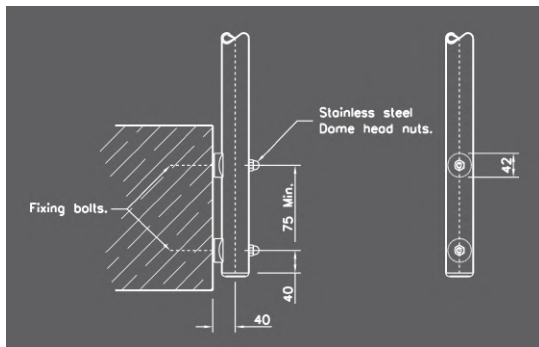
BRIGHT POLISH STAINLESS STEEL



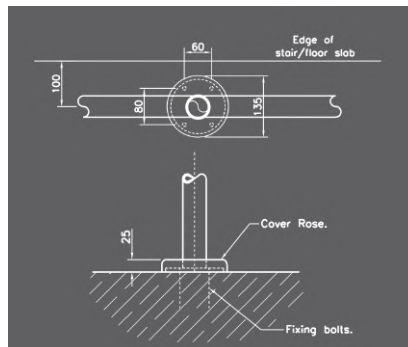
POWDER COATING COLOUR

High-end architecture coating with 10 years corrosion protection warranty

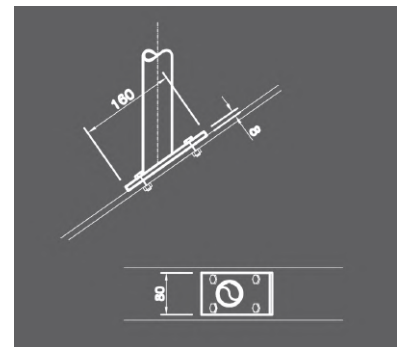
FIXING



SIDE MOUNT



TOP MOUNT



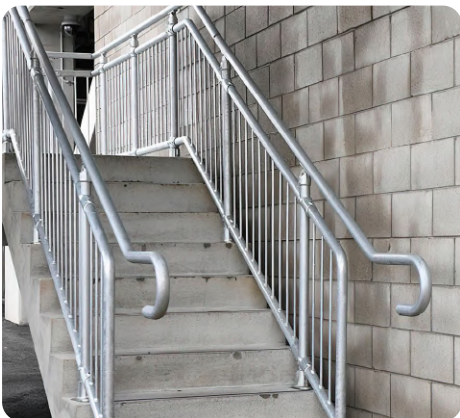
ANGLE MOUNT

MODULAR HANDRAIL





STVS MODULAR HANDRAIL SYSTEMS



COST EFFICIENT AND EASY MAINTENANCE

- ❖ Simple, no-weld, no site hot work, reducing risk for corrosion.
- ❖ Easy maintenance, no site shutdown require for maintenance.
- ❖ Offering the lowest cost of product in lifetime.
- ❖ Elegant appearance



SAFETY AND COMPLIANCE

- ❖ Quality standalizer
- ❖ No dependence on welder skill on site.
- ❖ STVS Modular is tested systems.



LESS TIME ON SITE

- ❖ No weld means no hot work permits, easier and safer on site
- ❖ Modular assembly and rapid, streamlined onsite installation.

APPLICATION



EXIT STAIRCASE



INDUSTRIAL STAIRCASE
HANDRAIL



MEZANINE HANDRAIL



WALK WAY HANRAIL



WATER TREATMENT HANDRAIL



RIVER/LAKE HANDRAIL



PLATFORM HANDRAIL



PAKING AREA



ROOF HANDRAIL

TESTED HANDRAIL SYSTEMS

DESIGN & TESTED EXCEEDS 150 KG FORCE AT ANY DIRECTION



FOCUS PULL 200 KG INTO MIDDLE OF TOP RAIL WITHIN 2 MINUTES



**PULL 150 KG INTO MIDDLE POST
RESULT NO CHANGE SHAPE**



Test Report

No. VNHL1907012485HG

Date: August 23, 2019

Page 1 of 6

STVS CO., LTD

37 HOA MAI, WARD 2, PHU NHUAN DISTRICT, HO CHI MINH CITY, VIETNAM

The following sample(s) was/were submitted and identified by the client as:

SGS Job No.	: VNHL1907012485HG
Sample Description	: ASSEMBLY HANDRAIL "(LAN CAN LAP RAP)"
Color	: "MA KEM" (GALVANIZED)
Characteristic	: "THEP MA KEM NHUNG NONG"
Style / Item No.	: CP32HB3P0G0
Date of Production	: 06/2019
Manufacturer	: STVS CO., LTD
Buyer	: STVS CO., LTD
Country of Origin	: VIET NAM
Country of Destination	: WORLD WIDE
Other Information	: ASSEMBLY HANDRAIL PIPE DIMENSION: 42.2x3.2mm POST CENTRE DISTANT: 1500mm HEIGHT: 1050mm HORIZONTAL BARS QUANTITY: 2 BARS ANCHOR BOLT: M12-100 FINISHING: HOT DIP GALVANIZED MANUFACTURE: STVS CO., LTD
Sample Receiving Date	: JULY 29, 2019
Final confirmed Date	: JULY 29, 2019
Testing Period	: JULY 29, 2019 TO AUGUST 05, 2019
Test Requested	: SELECTED TEST (S) AS REQUESTED BY CLIENT.
Test Results	: PLEASE REFER TO NEXT PAGE(S).

This document is issued by the Company subject to its General Conditions of Service printed overleaf, available on request or accessible at <http://www.sgs.com/en/Terms-and-Conditions.aspx> and, for electronic format documents, subject to Terms and Conditions for Electronic Documents at <http://www.sgs.com/en/Terms-and-Conditions/Terms-and-Conditions.aspx>.

Attention is drawn to the limitations of liability, indemnification and jurisdiction issues defined therein. Any holder of this document is advised that information contained hereon reflects the Company's findings at the time of its intervention only and within the limits of Client's instructions, if any. The Company's sole responsibility is to its Client and this document does not exonerate parties to a transaction from exercising all their rights and obligations under the transaction documents. This document cannot be reproduced except in full, without prior written approval of the Company. Any unauthorized alteration, forgery or falsification of the content or appearance of this document is unlawful and offenders may be prosecuted to the fullest extent of the law.

Unless otherwise stated the results shown in this test report refer only to the sample(s) tested and such sample(s) are retained for 90 days only.

SGS Vietnam Ltd Office: 198 Nguyen Thi Minh Khai St, District 3, Ho Chi Minh City, Vietnam t (84-28) 3935 1920 f (84-28) 3935 1921 www.sgs.com
Lab: Lot III/21, 195A St, Industrial Group III, Tan Binh IZ, Tan Phu District, HCMC, S.R. Vietnam t (84-28) 3816 0999 f (84-28) 3816 0996

Member of the SGS Group (SGS SA)



Test Report

No. VNHL1907012485HG

Date: August 23, 2019

Page 2 of 6

Signed for and on behalf of

SGS Vietnam Ltd



Wong Cho Wing
Hardline and E&E Lab Manager

This document is issued by the Company subject to its General Conditions of Service printed overleaf, available on request or accessible at <http://www.sgs.com/en/Terms-and-Conditions.aspx> and, for electronic format documents, subject to Terms and Conditions for Electronic Documents at <http://www.sgs.com/en/Terms-and-Conditions/Terms-and-Conditions.aspx>.

Attention is drawn to the limitations of liability, indemnification and jurisdiction issues defined therein. Any holder of this document is advised that information contained hereon reflects the Company's findings at the time of its intervention only and within the limits of Client's instructions, if any. The Company's sole responsibility is to its Client and this document does not exonerate parties to a transaction from exercising all their rights and obligations under the transaction documents. This document cannot be reproduced except in full, without prior written approval of the Company. Any unauthorized alteration, forgery or falsification of the content or appearance of this document is unlawful and offenders may be prosecuted to the fullest extent of the law.

Unless otherwise stated the results shown in this test report refer only to the sample(s) tested and such sample(s) are retained for 90 days only.

SGS Vietnam Ltd Office: 198 Nguyen Thi Minh Khai St, District 3, Ho Chi Minh City, Vietnam t (84-28) 3935 1920 f (84-28) 3935 1921 www.sgs.com
Lab: Lot III/21, 195A St, Industrial Group III, Tan Binh IZ, Tan Phu District, HCMC, S.R. Vietnam t (84-28) 3816 0999 f (84-28) 3816 0996

Member of the SGS Group (SGS SA)



MODULAR

Ha Duy Phien St | 700000 Ho Chi Minh City| Vietnam
Hotline: +84 938 770 765 | quyet.le@stvs.co | stvs.co

TECHNICAL SPECIFICATION

Material:

- Clamp fitting: Duction iron
- Tube: Steel tube according to ASTM A500 or BS 1387 standard
- Flange: SS400 or ASTM A36 standard
- Toe plate: Refer to Banana Stem toe plate systems
- Bolt: Steel

Dimension:

2 HORIZONTAL BARS – 2HB	3 HORIZONTAL BARS – 3HB
Condition: Keep spacing = <500mm	More safe for handrail

- Clamp fitting: Average thickness 5mm
- Locking set screw: M16-12
- Height: 1100mm
- Post distant: Max 1500mm
- Post section: D42.2x3.2mm
- Vertical bar section: D42.2x2.0 mm – Quantity: 1/2/3/4 bars
- Flange: 75x145x8mm (On steel mount)
120x120x8mm
- Connection bolts: On steel mount: Bolt set M12-50-8.8
On concrete mount: Expansion anchor bolt M12-100
- Toe plate: 104mm height x 14mm thickness

Finishing:

Type of finishing:

- G1: Single layer Polyester powder coating.
- G1 Plus: Double layer Epoxy primer powder coating + Polyester powder coating.
- G2: Hot dip galvanized finishing
- G3: Hot dip galvanized finishing + Polyester powder coating.

*Noted: Single layer paint thickness 110 micrometer, Tolerance of thickness +/-10%.
Double layer paint thickness 160-220 micrometer thickness
Toe plate only powder coating finish on aluminum material*

Color: Standard color RAL 1033 - (Other optional on request)

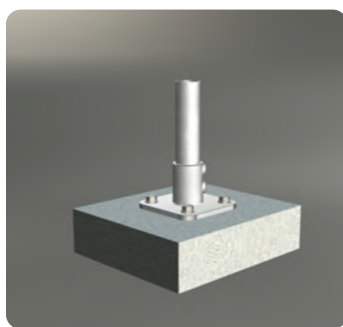


Configuration:



TOP MOUNT 1 (TM1)

Connect to the top of the mount by 2 bolts



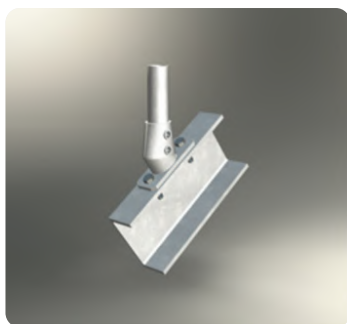
TOP MOUNT 2 (TM2)

Connect to the top of the mount by 4 bolts



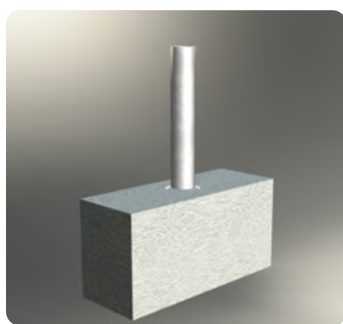
SIDE MOUNT 1 (SM1)

Connect to the side of the steel C beam by 2 bolt set



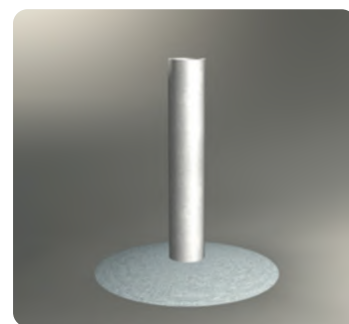
ANGLE MOUNT 1 (AM1)

Connect to the top slope mount



BURIED MOUNT 1 (BM1)

Buried in to concrete with the deep 200mm



BURIED MOUNT 2 (BM2)

Buried in to the ground with deep 500mm.

HANDRAIL WARRANTY MATRIX:

PAINTING SPECIFICATION		C1	C2	C3	C4	C5	CX
FINISHING TYPE							
MODULAR HANDRAIL <i>Tolerances for the anti-corrosion guarantee are defined based on ISO 4628-3 for the degree of rusting grade and ISO 4628-2 for the degree of blistering.</i>	G1	5	5	5	N/A	N/A	N/A
	G1 Plus	15	15	15	10	5	2
	Hot dip galvanized	10	10	10	10	5	5

Noted:

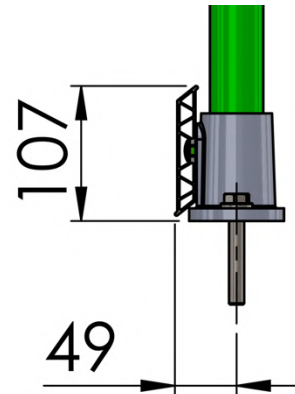
* Apply for inhouse application only

BANANA STEM TOE PLATE® SYSTEMS

STVS unique aluminum toeplate design. This design follow BS-EN ISO 14122 standard.

Extract: 7.1.7 A toe-plate with a minimum up stand of 100 mm shall be placed 10 mm maximum from the walking level and the edge of the platform.

The idea from banana stem structure give super strong toeplate also allows quick and easy installation. No drilling or welding, the structure allows for secure attachment with no exposed fasteners. Banana stem structure provides rigid non-buckling performance with the benefit of light weight, easy handling.



PRODUCT SPECIFICATION:

Dimension:	14mm thickness x 102mm height
Material:	Aluminum 6063 standard
Finishing:	Powder coating in silver color (Yellow color available on request)

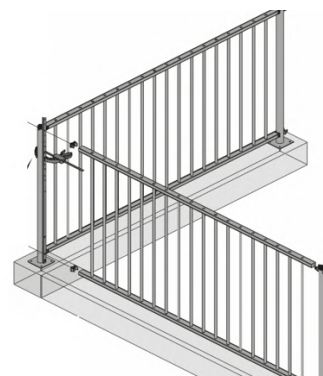
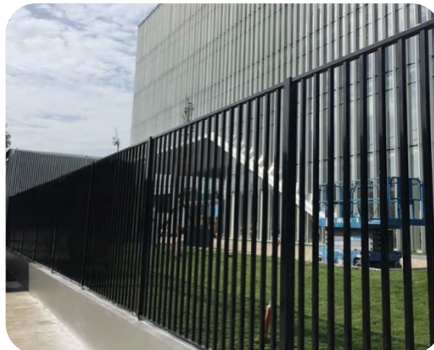
ALUMINUM PLATE	CONNECTOR
	
<p>Huge advantage compared to the steel toe plate – lighter, stronger, much more beautiful and corrosion resistant.</p>	<p>The connector is flexible to install without tolerance worry. Hot dip galvanized finishing give high corrosion resistant ability</p>
<p>DURABLE - STRONGER – LIGHTER – EASY TO INSTALL</p>	

RAILING FENCE





ASTRA RAILING FENCE



DURABLE

- Low maintenance. Low cost using
- STVS Modular professional coating know-how give long corrosion protection lifetime that minimize the cost of the fence.
- Impossible to remove the panel once installed.

BEAUTIFUL

- High-end and elegant appearance that enhance the beauty of the site.
- UV resistant keep color.
- Stainless steel hidden connector give strong and smooth appearance .

EASY TO INSTALL

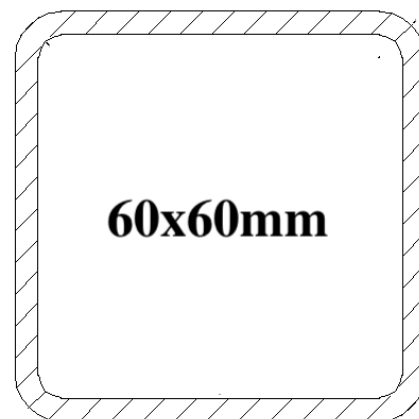
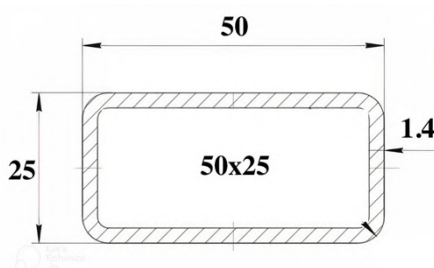
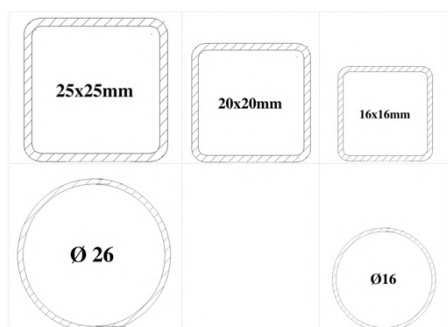
- Modular design that allow easy & quick installation
- Applicable for all types of configurations: Curves, Corners, Slopes, on walls... with the same standard products.

❖ DESIGN OPTIONS:



2 HORIZONTAL BARS

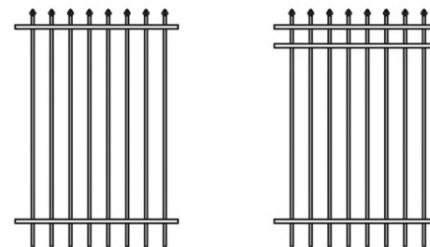
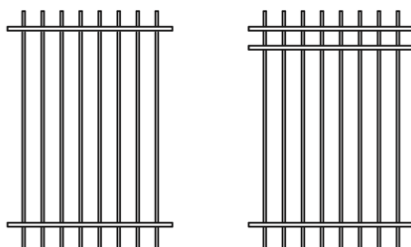
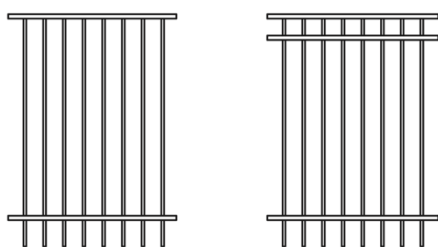
3 HORIZONTAL BARS



INFILL

HORIZONTAL BAR

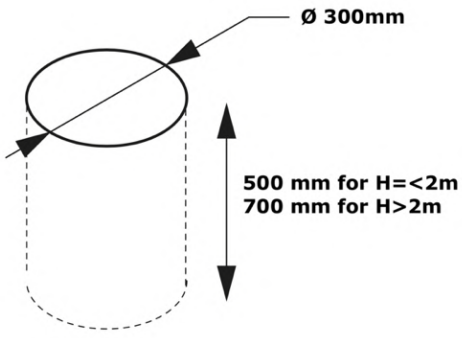
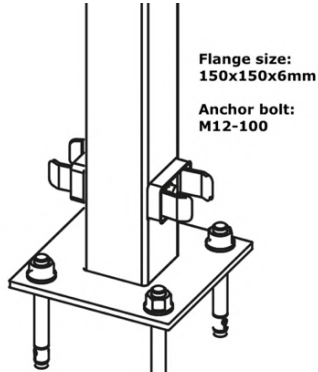

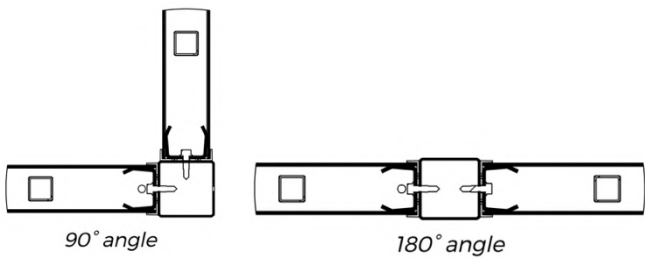



POST SECTION



**NON
OVERSTANDING**

OVERSTANDING

**OVERSTANDING
WITH PRESS SPEAR**

							
BURRIED INTO GROUND	ON THE FLANGE						
<p>Max height: 2.5m Recommend increase post section 75x75mm if $2.5mH \leq H \leq 3m$</p>	<p>Max Height: 2.0m Recommend burried post if $H > 2mH$</p>						
 <p>Screw-on "U" piece Slotted railings</p>	 <p>90° angle 180° angle</p>						
INSTALLATION PRINCIPAL	ANGLE MANAGEMENT						
<table border="1"> <tr> <td>G1</td><td>Single polyester powder coating.</td></tr> <tr> <td>G1 Plus</td><td>Double lyayer: Epoxy primer powder coating + polyester powder coating.</td></tr> <tr> <td>G1 E.Plus</td><td>Double lyayer: ED coating + standard polyester powder coating. (comming soon)</td></tr> </table>	G1	Single polyester powder coating.	G1 Plus	Double lyayer: Epoxy primer powder coating + polyester powder coating.	G1 E.Plus	Double lyayer: ED coating + standard polyester powder coating. (comming soon)	<p>Standard Color: (Other color available upon the request)</p> <div>  RAL9005  RAL9010  RAL 1033 </div>
G1	Single polyester powder coating.						
G1 Plus	Double lyayer: Epoxy primer powder coating + polyester powder coating.						
G1 E.Plus	Double lyayer: ED coating + standard polyester powder coating. (comming soon)						
FINISHING							

DESIGN NOTED:

- Standard post distant for **ASTRA** railing fence: **2500mm** and heigh <2100mm
- Standard post distant for **ASTRA** railing fence: **2000mm** and heigh >2100mm
- Only paint finishing for OVERSTANDING WITH PRESS SPEAR design

❖ ASTRA RAILING WARRANTY MATRIX:

PAINTING SPECIFICATION		C2	C3	C4	C5	CX
ASTRA FENCE <i>Tolerances for the anti-corrosion guarantee are defined based on ISO 4628-3 for the degree of rusting grade and ISO 4628-2 for the degree of blistering.</i>	G1	5	5	3	N/A	N/A
	G1 Plus	15	15	10	5	2
	G1 E.Plus	15	15	10	5	2

Noted:

* Corrosion warranty are not applied for accessories parts

*The anti-corrosion guarantee covers rust-related faults. It is based on the European standard ISO 12944, which defines precise corrosivity categories.



UNIQUE RAILING FENCE



DURABLE

- Low maintenance. Low cost using
- STVS Modular professional coating know-how give long corrosion protection lifetime that minimize the cost of the fence.
- Impossible to remove the panel once installed.

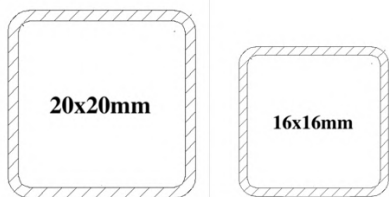

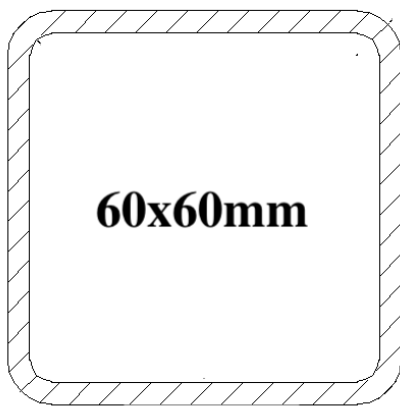
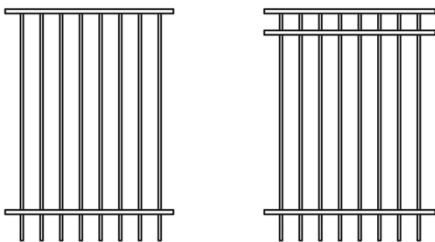
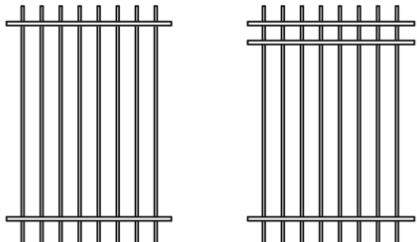
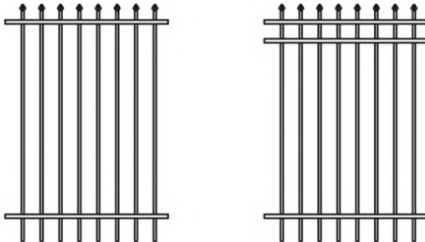
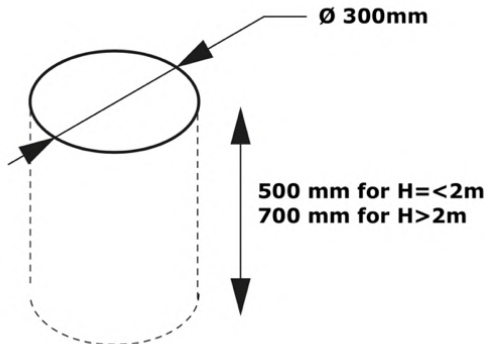
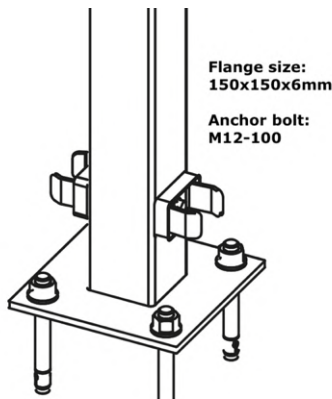
BEAUTIFUL




- High-end and elegant appearance that enhance the beauty of the site.
- UV resistant keep color.
- Stainless steel hidden connector give strong and smooth appearance .

EASY TO INSTALL

- Modular design that allow easy & quick installation
- Applicable for all types of configurations: Curves, Corners, Slopes, on walls...
- Impossible to remove the panel once installed.

❖ TECHNICAL SPECIFICATION:

		
INFILL	HORIZONTAL BAR	POST SECTION
		
NON OVERSTANDING	OVERSTANDING	OVERSTANDING WITH PRESS SPEAR
		
BURRIED INTO GROUND	ON THE FLANGE	
Max height: 2.5m Recommend increase post section 75x75mm if 2.5mH=<H=<3m	Max Height: 2.0m Recommend burried post if H>2mH	

		<div>Standard Color: <i>(Other color available upon the request)</i></div> <div><div></div><div><div>RAL9005</div><div>RAL9010</div><div>RAL 1033</div></div></div>	
G1	STVS standard polyester powder coating.		
G1 Plus	Primer paint + standard polyester powder coating.		
G1 E.Plus	ED coating + standard polyester powder coating. (Comming soon)		
FINISHING			

DESIGN NOTED:

- Standard post distant for **Unique** railing fence: 3000mm and heigh <2100mm
- Standard post distant for **Unique** railing fence: 2000mm and heigh >2100mm
- Only paint finishing for OVERSTANDING WITH PRESS SPEAR design
- Always have support bar on the panel.

UNIQUE RAILING WARRANTY MATRIX:

PAINTING SPECIFICATION		C2	C3	C4	C5	CX
UNIQUE FENCE <i>Tolerances for the anti-corrosion guarantee are defined based on ISO 4628-3 for the degree of rusting grade and ISO 4628-2 for the degree of blistering.</i>	G1	5	5	5	N/A	N/A
	G1 Plus	15	15	10	5	2
	G1 E.Plus	15	15	10	5	2

NOTED:

- ❖ Corrosion warranty are applied for fence frame.
- ❖ The anti-corrosion guarantee covers rust-related faults. It is based on the European standard ISO 12944, which defines precise corrosivity categories.

GATE





APOLLO® SLIDING GATE

KEY FEATURES:

This single leaf sliding gate boasts the latest technology and such smooth and stable operation.

The gate frame is square hollow section steel with a choice of square, mesh or round vertical bar infill. The main gate beam is heavy duty steel that gives the gate a strong structure.

Available in a wide range of widths 3-12m and heights from 1-2.4m.

The STVS Modular sliding gate design has a strong rail system with I structure and underground base support that is suitable for even heavy duty truck areas. The wheels are designed for heavy duty and give a very smooth and long last operation.

The accessories was made in Euro with designed much more than the loading of the gate weight give a perfection in operation and allow easy manual or motor-driven operation. This

guarantees trouble-free open/close movements and reduces maintenance.

Gate surfaces are extremely robust with hot dip galvanized or high-end architecture polyester powder coating finish give up to 15 years corrosion protection warranty in the C2, C3 environment grade.

- ❖ **Luxury appearance enhances the beauty of the site.**
- ❖ **Strong gate structure gives high security.**
- ❖ **Silence and very smooth operation.**
- ❖ **Top quality Euro made accessories.**
- ❖ **Stable, low maintenance cost.**
- ❖ **STVS coating that give a long corrosion protection warranty and long last color.**
- ❖ **2 years motor warranty for manufacturing failure**
- ❖ **10,000 cycle tested**



M O D U L A R

Ha Duy Phien St | 700000 Ho Chi Minh City | Vietnam
Hotline: +84 938 770 765 | quyet.le@stvs.co | stvs.co

TECHNICAL SPECIFICATION

Dimension:

Nominal Passage	3000	4000	5000	6000	7000	8000	9000	10000	11000	12000
Frame section	75x75									
Beam section	100x150								150x150	
Post	Install on the concrete post									

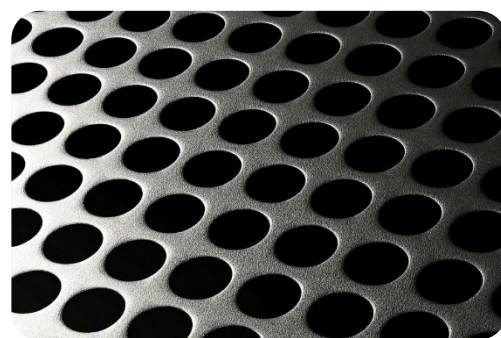
Leaf:	Single leaf
Opening:	Maximum 12mW
Operation:	Motorized/ Manual
Infill:	Mesh/ Tube/ Perforated sheets/ Customized



Mesh



Square/round tube

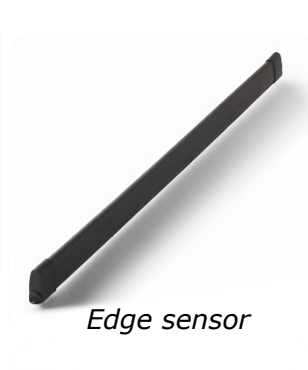


Perforated sheet

Control:	Remote as standard Optional: push button,...
Finishing:	G1/ G1 Plus for geight height = <2000mm PU coating For gate height >2000mm Hot dip galvanized for rack cover, guiding and receiver
Safety device:	Optional



Alarm light



Edge sensor



Beam sensor



JUPITER® SLIDING GATE

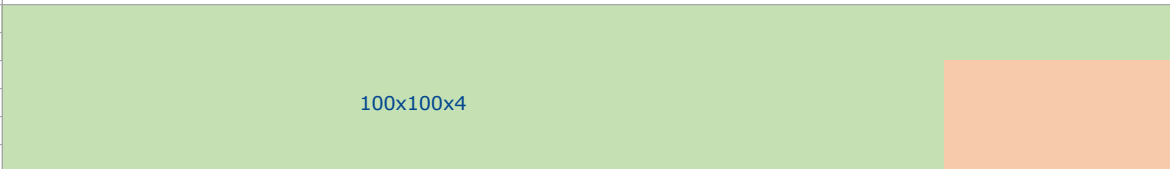

KEY FEATURES:

- ❖ Luxury appearance enhances the beauty of the site.
- ❖ Strong gate structure, high security.
- ❖ Silence and very smooth operation.
- ❖ Top quality Euro made accessories.
- ❖ Stable, low maintenance cost.
- ❖ STVS coating that give a long corrosion protection warranty and long last color.
- ❖ 2 years motor warranty for manufacturing failure
- ❖ 10,000 cycles tested



TECHNICAL SPECIFICATION

Dimension:

Nominal Passage	3000	4000	5000	6000	7000	8000	9000	10000	11000	12000
Frame section	75x75									
Beam section	100x150								150x150	
HEIGHT	POST SECTION									
1000										
1200										
1500										
1600										
1800										
2000										
2200										
2400										

Leaf:

Single/ Double leaves

Opening:

Maximum 12mW for single leaf, 20mW for double leaves

Operation:

Motorized/ Manual

Infill:

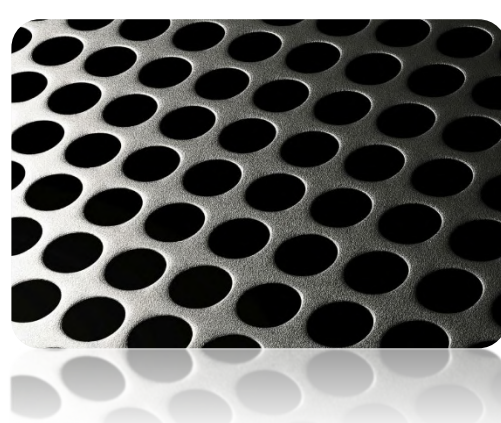
Mesh/ Tube/ Perforated sheets/ Customized



Mesh



Square/round tube



Perforated sheet

Control:

Remote as standard Optional: push button,...

Finishing:

G1/ G1 Plus for geight height = <2000mm

PU coating For gate height >2000mm

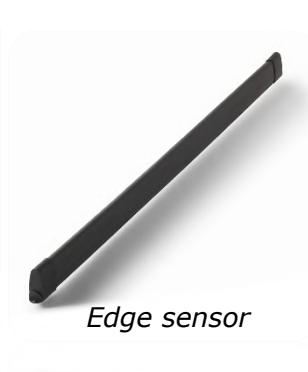
Hot dip galvanized for rack cover, guiding and receiver

Optional

Safety device:



Alarm light



Edge sensor



Beam sensor



JUPITER PLUS® SLIDING GATE

KEY FEATURES:

This single or double leaf sliding gate boasts the latest technology and such smooth and stable operation.

The gate frame is square hollow section steel with a choice of square, mesh or round vertical bar infill. The main gate beam and post is heavy duty steel that give to the gate a strong structure. Available in a wide range of widths from **3 -15m** and heights from 1-2.2m.

The STVS Modular sliding gate design has strong rail system with I structure and under ground base supporter that suitable for even heavy duty truck areas. The wheels are designed for heavy duty operate give a very smooth and long last operation.

The accessories was made in Euro with designed much more than the loading of the gate weight give a perfection in operation and allow easy manual or motor-driven operation.

This guarantees trouble-free open/close movements and reduces maintenance.

Gate surfaces are extremely robust with high quality galvanized or high quality architecture powder coating finish that gives up to 15 years corrosion protection warranty in the C2, C3 environment grade.

- ❖ **Strong gate structure give high security.**
- ❖ **Euro design with elegant looks that enhance the beauty of the site.**
- ❖ **Wide nominal opening (maximum 15 meters).**
- ❖ **Top quality Euro made accessories give stable commissioning.**
- ❖ **Silence and very smoothly operation.**
- ❖ **Stable operation, low maintenance cost.**
- ❖ **STVS coating that give a long corrosion protection warranty and long last color.**
- ❖ **2 years motor warranty for manufacturing failure**
- ❖ **5,000 cycle tested**

TECHNICAL SPECIFICATION

Dimension:

Nominal Passage (mm)	12000	13000	14000	15000
Frame section (mm)	75x75			
Beam section (mm)	150x150			
HEIGHT	DOUBLE POST			
1000	100x100x4			
1200				
1500				
1600				
1800				
2000				
2200				

Leaf:

Single/ Double leaves

Opening:

Maximum 15mW for single leaf, 25mW for double leaves

Operation:

Motorized

Infill:

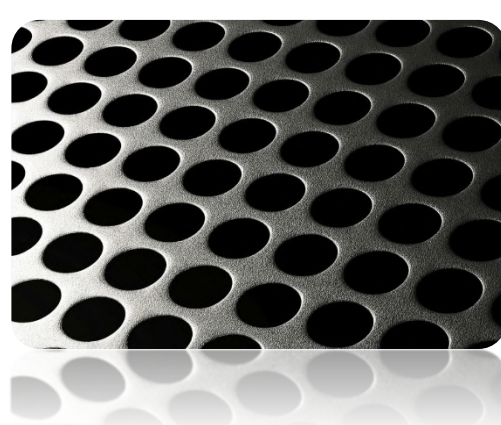
Mesh/ Tube/ Perforated sheets/ Customized



Mesh



Square/round tube



Perforated sheet

Control:

Remote as standard Optional: push button,...

Finishing:

G1/ G1 Plus for geight height =<2000mm

PU coating For gate height >2000mm

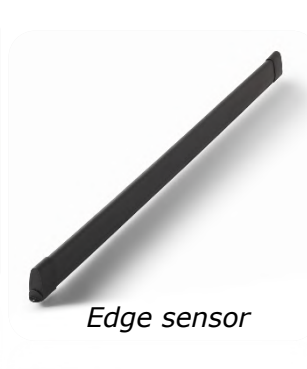
Hot dip galvanized for rack cover, guiding and receiver

Optional

Safety device:



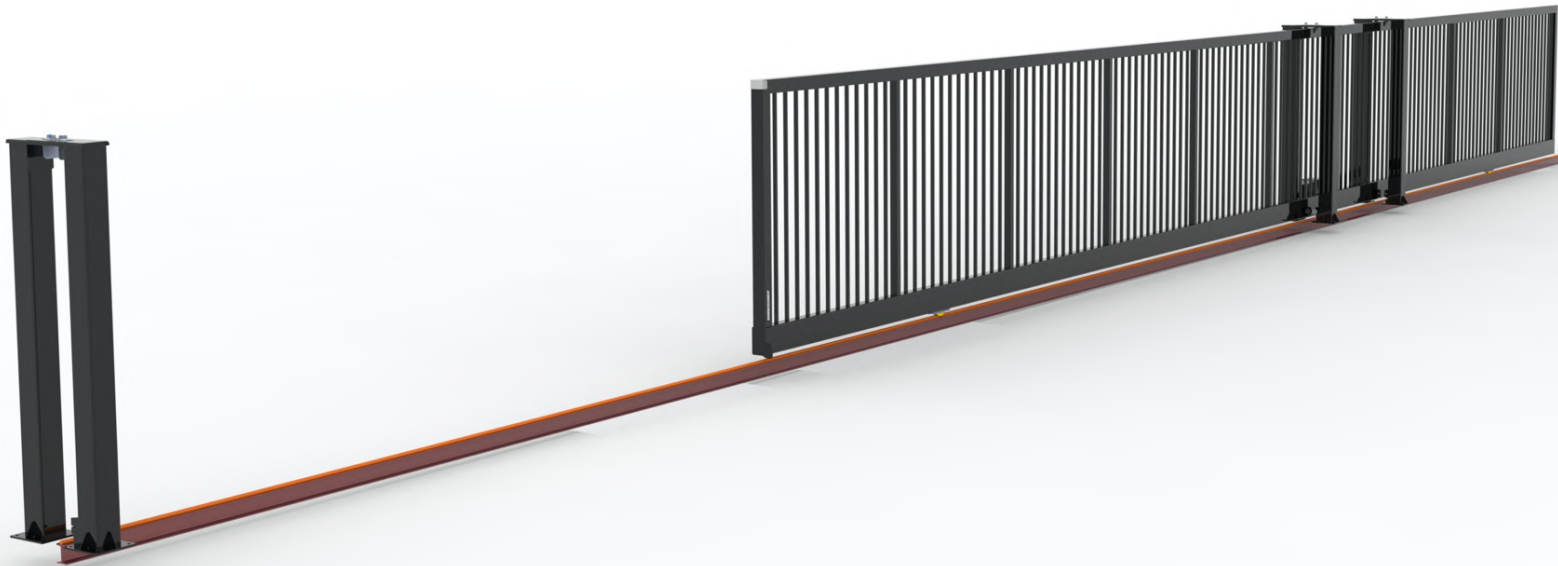
Alarm light



Edge sensor



Beam sensor



THE SUN® SLIDING GATE

KEY FEATURES:

This single leaf sliding gate boasts the latest technology, such smooth and stable operation.

The Sun sliding gate design for UNIQUE and LARGER opening require with stable operation purpose. The gate structure is heavy duty that allow the opening up to 18m and heights from 1-2.4m.

The STVS Modular sliding gate design has strong rail system with I structure and under ground base supporter that suitable for even heavy duty truck areas. The wheels are designed for heavy duty operate give a very smooth and long last operation.

The accessories was made in Euro with designed much more than the loading of the gate weight give a perfection in operation and allow smooth operation on motor-driven.

This guarantees trouble-free open/close movements and reduces maintenance.

All gate surfaces are extremely robust with high quality architecture powder coated finish.

- ❖ **Strong gate structure give high security.**
- ❖ **Euro design with elegant looks that enhance the beauty of the site.**
- ❖ **Wide nominal opening up to 18m meters.**
- ❖ **Top quality Euro made accessories give stable commissioning.**
- ❖ **Silence and very smoothly operation.**
- ❖ **Stable operation, low maintenance cost.**
- ❖ **STVS coating that give a long corrosion protection warranty and long last color.**
- ❖ **2 years motor warranty for manufacturing failure**

TECHNICAL SPECIFICATION

Dimension:

Nominal Passage (mm)	15000	16000	17000	18000
Beam section (mm)	200x200			
Frame section (mm)	100x100			
Post section (mm)	Double Post - 150x150			

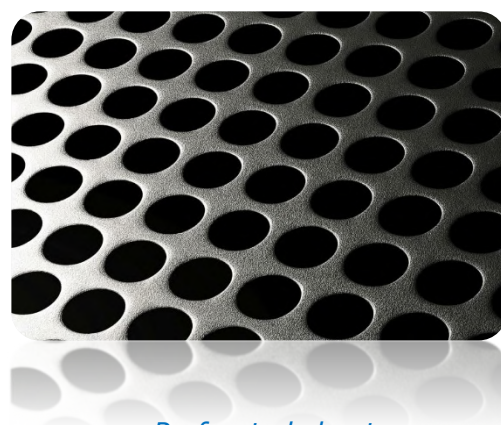
Leaf:	Single/ Double leaves
Opening:	Maximum 18mW for single leaf, 30mW for double leaves
Operation:	Motorized
Infill:	Mesh/ Tube/ Perforated sheets/ Customized



Mesh



Square/round tube

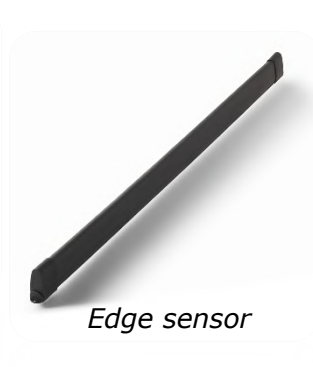


Perforated sheet

Control:	Remote as standard Optional: push button,...
Finishing:	G1/ G1 Plus for geight height = <2000mm PU coating For gate height >2000mm Hot dip galvanized for rack cover, guiding and receiver Optional
Safety device:	



Alarm light



Edge sensor



Beam sensor



JUPITER CANTILEVER SLIDING GATE

KEY FEATURES:

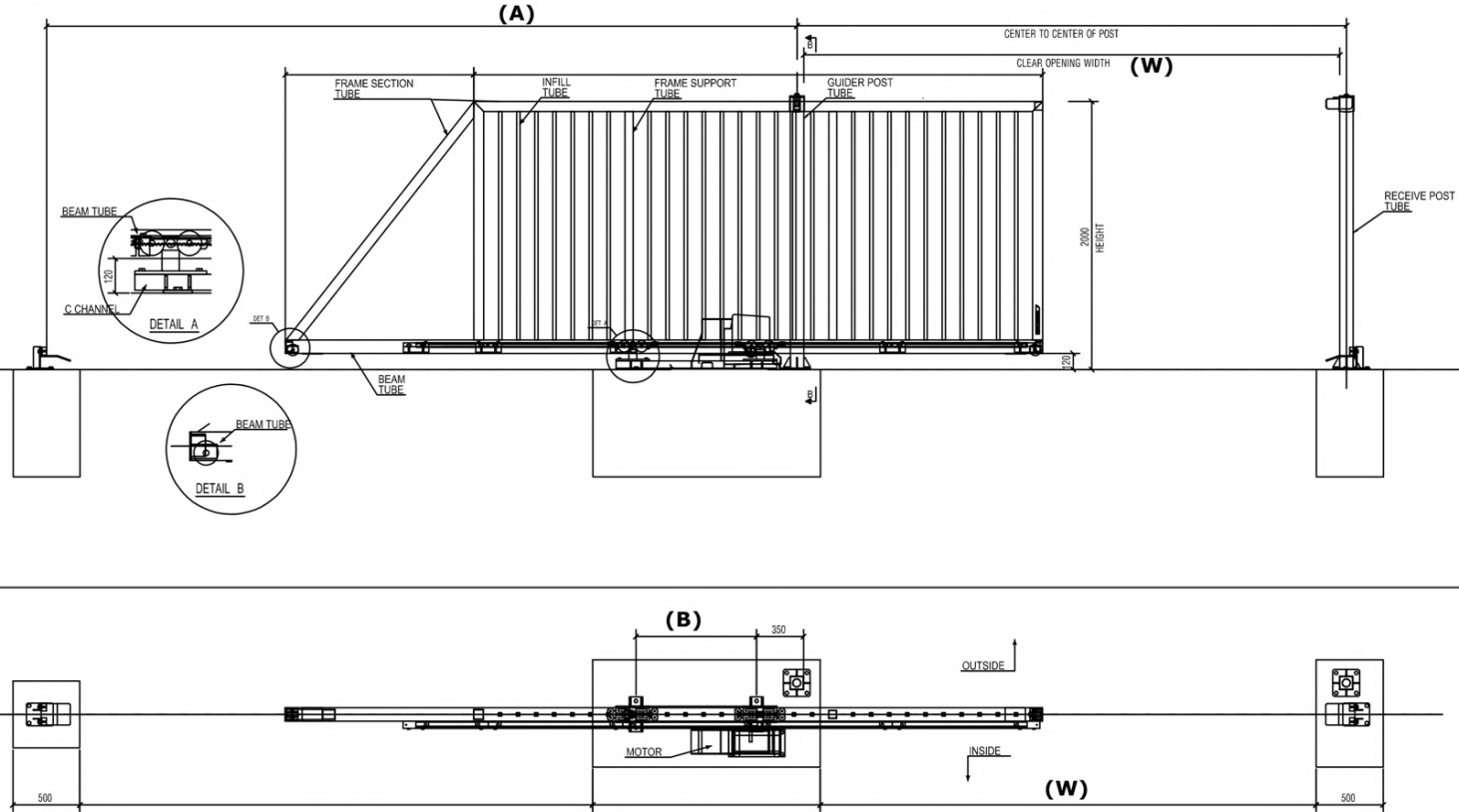
- Modern and luxury design. High quality finishing that enhances the beauty of the site.
- Heavy and strong gate structure makes the gate strong and stable structure, which helps the gate commissioning stable in the long term.
- Jupiter cantilever uses the latest technology from Euro and is extremely smooth, low noise and durable.
- The accessories were made in Euro with designed much more than the loading of the gate weight, giving a perfection in operation and allowing easy manual or motor-driven operation.
- This guarantees trouble-free open/close movements and reduces maintenance.
- All gate surfaces are extremely robust with high quality architecture powder coating.
- Pre-wiring and tests performed in-factory.



TECHNICAL SPECIFICATION

RANGE: JUPITER CANTILEVER SLIDING GATE

Dimension:



Nominal Passage	3000	4000	5000	6000	7000	8000	9000	10000	11000	12000
Frame section	75x75									
Beam section	100x100				150x150				150x150 & 100x100	
HEIGHT	POST SECTION									
1000	100x100x4									
1200										
1500										
1600										
1800										
2000										
2200	150x150x4.5									
2400										



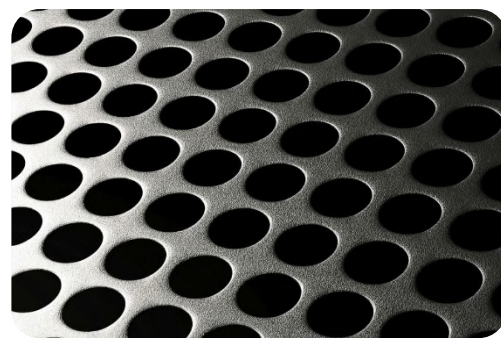
Leaf:	Single/ Double leaves
Opening:	Maximum 12mW for single leaf, 20mW for double leaves
Operation:	Motorized/ Manual
Infill:	Mesh/ Tube/ Perforated sheets/ Customized



Mesh



Square/round tube

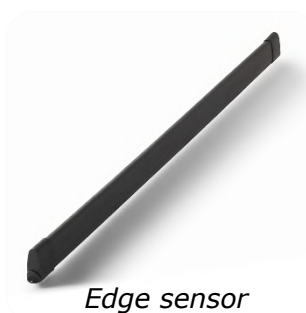


Perforated sheet

Control:	Remote as standard Optional: push button,...
Finishing:	G1/ G1 Plus for gate height $\leq 2000\text{mm}$ PU coating For gate height $> 2000\text{mm}$ Hot dip galvanized for rack cover, guiding and receiver
Safety device:	Optional



Alarm light



Edge sensor



Beam sensor



TELESCOPIC SLIDING GATE

KEY FEATURES:

The telescopic sliding gate design for small sliding back space and stable purpose. The gate structure and accessories is unique and know how design by STVS Modular.

The STVS Modular sliding gate design has strong rail system with I structure and under ground base supporter that suitable for even heavy duty truck areas. The wheels are designed for heavy duty operate give a very smooth and long last operation.

The accessories was made in Euro with designed much more than the loading of the gate weight

give a perfection in operation and allow smooth operation on motor-driven.

This guarantees trouble-free open/close movements and reduces maintenance.

All gate surfaces are extremely robust with high quality galvanized or high quality architecture powder coated finish.

- ❖ **Small sliding back space needed**
- ❖ **Opening width up to 12 meters**
- ❖ **Easily integrated with security options (Sensor, alarm light, intercom or phone)**
- ❖ **STVS coating that give a long corrosion protection warranty and long last color.**

TELESCOPIC SLIDING GATE

MOTOR DRIVEN

- **Motor speed up to 8m/min for gate size: 15-18mW (Sun).**
- **Motor speed up to 9m/min for gate size up to 12mW**
- **Slows at the start and end of the cycle (smooth jolt-free operation)**
- **Up to 40 cycles per hour for 6m openings (1 cycle = 1 opening + 1 closing)**
- **Not affected by adverse weather conditions**
- **24 VDC backup battery ensures continued operation in the event of a supply failure**
- **Lifetime lubrication**
- **Includes set of cells for lightweight vehicles**
- **2-year guarantee**



The automation is made up of a self-locking gear motor controlled by magnetic encoder with an in-built:

- Electronic programmer;
- 433MHz FM receiver;
- slot-in battery charger;
- NiMH batteries.



MANUAL RELEASE SLX3024CB



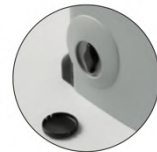
SELF-PROGRAMMING MONITORED BY AN LCD GRAPHICS DISPLAY



MANUAL RELEASE SLX1524CB



MANUAL RELEASE SLX24DRACO



MANUAL RELEASE SL524

The electronic programmer is factory fitted with a graphic LCD display (128 x 128 pixels) with backlighting in six different languages. The menu allows you to rapidly set the system parameters including: the sequential button mode, automatic reclosing, warning lamp pre-flashing, intermittent warning lamp activation, indicator light and photoelectric cell function setting etc.

The electronics card, thanks to the presence of the real-time clock, allows you to set 10 events (shown on the display) and these events permit you to regulate the opening and closing of the motor at different times during the day within 3 weekly time bands (Mon- Fri, Sat-Sun, Mon-Sun); the events can be enabled or disabled (during holiday periods) either from the menu or by means of a radio channel. The appliance is fitted with a safe and secure manual release system activated by a personalised key.



SWING GATE

RANGE:

MANUAL SWING GATE

Material:

Steel

Finishing:

Architecture polyester powder coating

Nominal height:

1000-2400mm

PU coating for over size request

Nominal width:

900-10000mm

Infill:

Square bars 25x25,

Round bars dia 27,

Wire mesh

Leaf:

Single/ Double

Operation:

Manual

Warranty:

10 years anti corrosion

Hardware:

High quality Euro made

Nominal Passage (mm)		1000	1200	1500	2000	2500	3000	3500	4000	4500	5000		
Frame section (mm)		50x50x2			50x50x3		75x75x3			100x100x2.5			
Infill section (mm)		25x25											
Space under gate leaf (mm)		80											
Nominal height	Post length	Post section (mm)											
1000	1500	75x75x3			100x100x3			150x150x5				200x200x12	
1200	1700												
1500	2000												
1800	2500												
2000	3000												





BOLLARDS



STEEL BOLLARDS

- ❖ Strong and beautiful appearance
- ❖ Super round top
- ❖ Very smooth and shine



STAINLESS STEEL BOLLARDS

- ❖ Hairline finish
- ❖ Flat top design
- ❖ Inner flange or burried

MAINTENANCE & WARRANTY

STVS RECOMMENDS REGULAR MAINTENANCE OF ITS PRODUCTS

- Frequency: all surfaces require 6-monthly maintenance. Coated surfaces that are exposed to dust, mud, sand or salt require meticulous cleaning.
- Cleaning: this involves washing with water and a mild detergent (pH 5 to 8) followed by careful rinsing with clean water and drying. The use of an abrasive cleaner is prohibited.
- Special maintenance for motor-driven gates: maintenance is compulsory and must be performed once every 6 months. STVS offers installation services as well as maintenance and servicing agreements. Contact STVS or our subsidiary.

GATE WARRANTY MATRIX

The anti-corrosion guarantee only covers rust-related faults. It is based on the European standard ISO 12944, which defines precise corrosivity categories.

PAINTING SPECIFICATION		C2	C3	C4	C5	CX
GATE <i>Tolerances for the anti-corrosion guarantee are defined based on ISO 4628-3 for the degree of rusting grade and ISO 4628-2 for the degree of blistering.</i>	G1	5	5	N/A	N/A	N/A
	G1 Plus	15	15	10	5	2

CONDITION OF WARRANTY

- STVS grants a 2-year operation warranty that is activated upon the actual start-up of the product or within a maximum of 2 years of delivery of the product.
- The warranty applies to the initial installation site subject to products being maintained each 6 months as maintenance recommendations.
- Wear parts (pinions, racks, batteries, rollers, etc.) are not covered by the warranty.
- Corrosion warranty are not applied for accessories parts

Modular handrail, fence and gate systems

PREMIUM QUALITY



STV

MODULAR